

## Title: A centimeter-long bacterium with DNA compartmentalized in membrane-bound organelles

**Authors:** Jean-Marie Volland<sup>1,2‡\*</sup>, Silvina Gonzalez-Rizzo<sup>3‡</sup>, Olivier Gros<sup>3,4‡</sup>, Tomáš Tým<sup>1,2</sup>, Natalia Ivanova<sup>1</sup>, Frederik Schulz<sup>1</sup>, Danielle Goudeau<sup>1</sup>, Nathalie H Elisabeth<sup>5</sup>, Nandita Nath<sup>1</sup>, Daniel Udvary<sup>1</sup>, Rex R Malmstrom<sup>1</sup>, Chantal Guidi-Rontani<sup>6</sup>, Susanne Bolte-Kluge<sup>7</sup>, Karen M Davies<sup>5</sup>, Maïtena R Jean<sup>3</sup>, Jean-Louis Mansot<sup>4</sup>, Nigel J Mouncey<sup>1</sup>, Esther Angert<sup>8</sup>, Tanja Woyke<sup>1\*</sup>, Shailesh V Date<sup>2,9,10\*</sup>

*‡Equal contribution; \*Corresponding authors*

### Affiliations:

<sup>1</sup> Department of Energy Joint Genome Institute, Lawrence Berkeley National Laboratory, Berkeley, CA, USA.

<sup>2</sup> Laboratory for Research in Complex Systems, Menlo Park, CA, USA.

<sup>3</sup> Institut de Systématique, Evolution, Biodiversité, Muséum National d'Histoire Naturelle, CNRS, Sorbonne Université, EPHE, Université des Antilles. Campus de Fouillol, Pointe-à-Pitre, France

<sup>4</sup> Centre Commun de Caractérisation des Matériaux des Antilles et de la Guyane. Université des Antilles, UFR des Sciences Exactes et Naturelles, Pointe-à-Pitre, Guadeloupe, France.

<sup>5</sup> Department of Energy Molecular Biophysics and Integrated Bioimaging, Lawrence Berkeley National Laboratory. Berkeley, CA, USA.

<sup>6</sup> Institut de Systématique, Evolution, Biodiversité CNRS UMR 7205, Museum National d'Histoire Naturelle, Paris, France

<sup>7</sup> Sorbonne Universités, UPMC Univ. Paris 06, CNRS FRE3631, Institut de Biologie Paris Seine, Paris France.

<sup>8</sup> Cornell University, College of Agriculture and Life Sciences, Department of Microbiology, Ithaca, NY, USA.

<sup>9</sup> University of California San Francisco, San Francisco, CA, USA.

<sup>10</sup> San Francisco State University, San Francisco, CA, USA

\*Correspondence to: [jvolland@lbl.gov](mailto:jvolland@lbl.gov), [twoyke@lbl.gov](mailto:twoyke@lbl.gov), [shailesh.date@lrc.systems](mailto:shailesh.date@lrc.systems)

**Abstract:** Cells of most bacterial species are around 2 µm in length, with some of the largest specimens reaching 750 µm. Using fluorescence, x-ray, and electron microscopy in conjunction with genome sequencing, we characterized *Ca. Thiomargarita magnifica*, a bacterium with an average cell length greater than 9,000 µm that is visible to the naked eye. We found that these cells grow orders of magnitude over theoretical limits for bacterial cell size through unique biology, display unprecedented polyploidy of more than half a million copies of a very large genome, and undergo a dimorphic life cycle with asymmetric segregation of chromosomes in daughter cells. These features, along with compartmentalization of genomic material and protein synthesis in membrane-bound organelles, indicate gain of complexity in the *Thiomargarita* lineage, and challenge traditional concepts of bacterial cells.

**One Sentence Summary:** *Ca. T. magnifica* are compartmentalized centimeter-long bacteria

## Main Text:

Bacteria and archaea are the most diverse and abundant organisms on Earth. With only a small fraction of them isolated in culture, we remain grossly ignorant of their biology (1). While most model bacteria and archaea are small, some remarkably large cells, referred to as giant bacteria, are evident in at least four phyla (2), and have cellular sizes in the range of tens or even hundreds of microns (3, 4). Some exceptional members of sulfur-oxidizing gammaproteobacteria *Thiomargarita namibiensis*, for instance, are known to reach up to 750  $\mu\text{m}$  (average size: 180  $\mu\text{m}$ ) (4-6). Such bacterial giants raise the question of whether more macro-bacteria might still be out there but have not yet been identified.

Here, we describe a novel sessile filamentous *Thiomargarita* species from a marine sulfidic environment that dwarfs all other known giant bacteria by about 50-fold. Our multi-faceted imaging analyses reveal massive polyploidy and a dimorphic developmental cycle where genome copies are asymmetrically segregated into apparent dispersive daughter cells. Importantly, we show that centimeter-long *Thiomargarita* filaments represent individual cells with genetic material and ribosomes compartmentalized into a novel type of membrane-bound organelle. Sequencing and analysis of genomes from five single cells revealed insights into distinct cell division and cell elongation mechanisms. These unique cellular features likely allow the organism to grow to an unusually large size and circumvent some of the biophysical and bioenergetic limitations on growth. In reference to its exceptional size, we propose to name this species *Thiomargarita magnifica* (referred to below as *Ca. Thiomargarita magnifica*).

### ***Ca. Thiomargarita magnifica* is a centimeter-long, single bacterial cell**

Some Large Sulfur Bacteria (LSB) form very long filaments which may reach several centimeters in length, but they are composed of thousands of individual cells which do not exceed 200  $\mu\text{m}$  (7-10). Here we observed seasonal “bouquets” of centimeter-long white filamentous *Thiomargarita* cells attached to sunken leaves of *Rhizophora mangle* (Fig. S1) in shallow tropical marine mangroves from Guadeloupe, Lesser Antilles. *Thiomargarita* spp. are sulfur-oxidizing gammaproteobacteria known to be morphologically diverse and display striking polyphenism (11). The morphology of the filaments observed in Guadeloupe resembled those of sessile *Thiomargarita*-like cells reported from deep-sea methane seeps (12). They had a stalk-like shape for most of their length and constricted gradually towards the apical end forming buds (Figs. 1A-E). In contrast to relatives that live buried in sediment, these filaments were smooth in appearance and free of epibiotic bacteria or any extracellular mucus matrix (Fig. S2) (11). Budding filaments had an average length of  $9.72 \pm 4.25$  mm, and only the most apical constrictions closed completely to form 1-4 rod-shaped separate cells of  $0.21 \pm 0.05$  mm. We also noted some filaments reaching a length of 20.00 mm (Figs. 1A, S1, S3), much larger than any previously described single-celled prokaryote.

To further characterize *Ca. T. magnifica* cells, we highlighted membranes using osmium tetroxide or fluorescent dye FM 1-43x and visualized entire filaments in 3D with Hard X-ray Tomography (HXT, n=4) and Confocal Laser Scanning Microscopy (CLSM, n=6) as well as filament sections (up to 850.6  $\mu\text{m}$  long) with Transmission Electron Microscopy (TEM, n=15). Strikingly, all techniques consistently showed that each filament was one continuous cell for nearly its entire length with no division septa, including the partial constrictions towards the apical pole. Only the most apical few buds were separated from the filament by a closed constriction and represented daughter cells (Figs. 1, S5 and Movies S1-S4).

Similar to other Large Sulfur Bacteria (LSB), *Ca. T. magnifica* cells showed a large central vacuole which was continuous along the whole filament and accounted for  $73.2 \pm 7.5\%$  (n=4) of total volume (Figs. 1D, E, S5 and Table S2). The cytoplasm was  $3.34 \pm 1.48\ \mu\text{m}$  thick and was constrained to the periphery of the cell (Figs. 1E, F and S5). TEM revealed numerous electron lucent vesicles  $2.40 \pm 1.03\ \mu\text{m}$  in diameter which corresponded to the refractile granules observed with bright-field microscopy and represented sulfur granules as shown by Energy Dispersive X-ray Spectroscopy (Figs. 1F, S5, S10 and Supplementary Text). The cell envelope consisted of a thick outer layer covering the cytoplasmic membrane (Fig. S5). The cytoplasm of *Ca. T. magnifica* appeared to be compartmentalized in the form of dense regions similar to other LSB (7, 10, 13), comprising multiple membrane-bound bodies  $1.31 \pm 0.70\ \mu\text{m}$  in diameter (Figs. 1F, G). We hypothesized that some of these dense regions within the cytoplasm, which were distinct from large sulfur granules, may contain dispersed genomic material, as polyploidy is evident in many giant bacteria (2, 14).

### ***Ca. T. magnifica* DNA is contained in a novel type of membrane-bound bacterial organelle**

While bacteria were once presumed to be un-compartmentalized “bags of enzymes,” recent studies show the presence of organelles with functions as diverse as anaerobic ammonium oxidation, photosynthesis or magnetic orientation (15). No bacteria or archaea are known to unambiguously segregate their genetic material in the manner of eukaryotes, although some evidence for a possible membrane-bound DNA compartment occupying most of the cell’s volume in a member of the Atribacteria has been reported (15, 16). Surprisingly, DAPI staining revealed DNA in *Ca. T. magnifica* cells was concentrated in membrane-bound granules (Fig. 2H-K), and not spread throughout the cytoplasm, as is common in bacteria. These DNA containing bodies also harbored electron-dense structures of 10 to 20 nm in size, similar to the signature of ribosomes (Fig. 2F-G). Fluorescence *in situ* hybridization (FISH) with probes specifically targeting ribosomal RNA sequences of *Thiomargarita* confirmed that ribosomes were indeed present and concentrated in these membrane-bound structures (Figs. 2 and S6 to S8), which were spread throughout the entire cell, including the apical buds (Fig. S8). This compartmentalization of DNA and ribosomes is reminiscent of genomic compartmentalization in eukaryotes and represents a novel cellular structure within bacteria. By analogy with pips – the

numerous small seeds in fruits such as watermelon or kiwi – we propose to name this bacterial organelle a “*pepin*” (singular *pepin*, plural *pepins*: from vulgar latin *pép*, an expressive creation used to express smallness).

## 5 ***A highly polyploid cell with a large genome***

All previously described giant bacteria are polyploid (2, 3, 14), *i.e.* their cells contain large numbers of genome copies – ranging from tens to tens of thousands – dispersed throughout the cell, supporting the local need for molecular machineries and overall cellular growth (17, 18). Polyploidy has been shown to decrease the selective pressure on genes, allowing intracellular gene duplication, reassortment and divergence and lead to extreme intracellular genetic diversity in some LSB (19). On the other hand, it may also allow balancing of genome copies through homologous recombination and support a high level of genome conservation (20). *Ca. T.* magnifica like all bacterial giants appeared to be polyploid; counts of DAPI stained DNA clusters on three CLSM 3D dataset suggested an average of  $36,880 \pm 7,956$  genome copies per millimeter of filament ( $737,598 \pm 159,115$  for a fully grown 2 cm cell, see Table S2, Fig. 2L, Movie S5 and details in Supplementary Text). This is the highest estimated number of genome copies for a single cell. It is one order of magnitude above that of other giant bacteria (2, 18).

To genomically characterize *Ca. T. magnifica*, we amplified, sequenced, and assembled the DNA of five individual cells collected from a single sunken leaf (Tables S3-S4). All five draft genomes appeared highly similar to each other with an Average Nucleotide Identity (ANI) above 99.5% (Table S5). Variant analysis within the single-cell genome sequences indicated a genomically homogenous population ( $1.22 \pm 0.18$  SNPs/100 kbp, Table S6) (21), which is similar to other polyploid bacteria (20, 22). The assemblies were estimated to be near complete at 91.0% to 93.7% with total sequence lengths between 11.5 Mb and 12.2 Mb. This is twice as large as the only other sequenced *Thiomargarita* species *Ca. T. nelsonii* (23, 24) and at the upper range of bacterial genome sizes; bacterial genomes are on average  $4.21 \pm 1.77$  Mb (Fig. S9). The *Ca. T. magnifica* genome from filament 4 contained 11,788 genes (only half with a functional annotation, see Table S4), more than three times the median gene count of prokaryotes (3,935 genes) (25). For the sake of comparison with eukaryotic organisms, *Ca. T. magnifica* has a genome as large as the baker yeast *S. cerevisiae* (12.1 Mb) and contains more genes than the model fungus *Aspergillus nidulans* ( $\approx 9,500$  genes).

Analysis of the genome revealed a large set of genes for sulfur oxidation and carbon fixation, suggesting chemoautotrophy, in accordance with our other evidence for thioautotrophy (Fig. S10, S11 and Supplementary Text). Like its sister lineage *Ca. T. nelsonii*, *Ca. T. magnifica* encoded a wide range of metabolic capabilities with one remarkable difference: it lacked nearly all genes involved in dissimilatory and assimilatory nitrate reduction, and denitrification except for Nar and Nap nitrate reductases. This suggests that nitrate can solely be used as an electron

acceptor (23, 24) (see Supplementary Text for extended genome analysis). The somewhat surprising absence of epibiotic bacteria, despite its size, may be explained by the high number of genes encoding secondary metabolism. With 25.9% of sequences dedicated to biosynthetic gene clusters (Fig. 3A), the genome encoded dozens of modular Non-Ribosomal Peptide Synthetases (NRPSs) and Polyketide Synthases (PKSs) systems, hinting at numerous secondary metabolism pathways (similar to Actinobacteria (Table S7)), that are indicative of antibiotic or bioactive compound production.

The *Ca. T. magnifica* genome also held clues for its unusual cell morphology, with an atypical complement of cell division and cell elongation genes. Many genes that encode core cell division proteins, including core components of Z ring assembly and regulation, FtsA, ZipA and FtsE-FtsX, were lacking (Fig. 3B, Table S8), whereas genes that encode the cytoskeletal protein FtsZ, which is part of well-conserved *dew* (“division and cell wall”) operon and the core component of Z ring, and proteins ZapA, ZapB and ZapD, which interact with FtsZ and regulate Z ring assembly, were conserved (26). Even more remarkably, the entire set of genes that encode late divisome proteins, including peptidoglycan polymerases FtsI and FtsW, as well as FtsQ, FtsL, FtsB, and FtsK, was absent from all *Ca. Thiomargarita* genomes (Fig. 3B, S16 and Table S8). This conspicuous lack of cell division genes was contrasted by a complete set of genes encoding cell elongation proteins, three of which - *mreD*, *rodZ* and peptidoglycan transpeptidase *mrda* - have undergone recent duplications, with both copies located next to each other on the chromosome (Fig. 3B, S13-15, Table S8) (26). It is possible that an increased number of cell elongation genes, coupled with the lack of key cell division genes, may be responsible for producing the unusually long filaments of *Ca. T. magnifica* (see Supplementary Text).

### ***Dimorphic developmental cycle of Ca. T. magnifica***

Laboratory observations of live *Ca. T. magnifica* revealed eventual apical bud detachment from the filament and release into the environment, likely representing a dispersive stage of the developmental cycle (Fig. 1C; S1B-F and Supplementary Text). We observed dozens of cells at all intermediary stages from the smallest attached cells resembling terminal segments recently settled to the largest filaments with apical constrictions (Fig. S1 and Movies S1-S3 and S6). Such a dimorphic life cycle resembles the aquatic single-celled model system *Caulobacter crescentus* as well as the multicellular segmented filamentous bacteria, albeit at a different scale, in which stalked “parent” cells produce free living “daughter” cells (27, 28). Due to this asymmetrical division mode, only a small fraction of the genome copies – present within pepins in the most apical bud - were transmitted to the daughter cell (Fig. S8). Like the polyploid giant bacterium *Epulopiscium* spp., *Ca. T. magnifica* apparently transmits only a subset of its genomes, to be called ‘germ line genomes,’ to the offspring (14, 18). If terminal buds are indeed daughter cells, such a developmental cycle may have evolved to enhance dispersion similar to the fruiting bodies of the social myxobacteria or to the aerial hyphae of *Streptomyces* spp. (29). This

apparent life cycle is also somewhat analogous to the sulfur oxidizing giant ciliate symbiosis, *Zoothamnium niveum* (30), possibly representing a case of convergent evolution of developmental cycle across domains (see Supplementary Text).

## 5 **Concluding remarks**

While cells of most bacteria and archaea are around 2  $\mu\text{m}$ , eukaryotic cells are usually between 10 and 20  $\mu\text{m}$  with some of the largest single-cell eukaryotes reaching 3 to 4 cm (31). Several theoretic frameworks explain the restriction of bacteria and archaea to microscopic sizes: i) lack of active intracellular transport and the reliance on chemical diffusion, which is efficient only along micrometer distances (4); ii) a predicted maximum cell volume constraining the number of needed ribosomes should the cell grow larger (32); or even iii) a decrease in energy efficiency due to mismatched surface area to volume ratio when considering placement of membrane-bound ATP synthases (33). These frameworks all suggest that with increasing size, the metabolic needs of a bacterial cell grow faster than the cell's capacity to sustain it and should reach a limit. The next largest prokaryote known after *Ca. T. magnifica*, - *Ca. T. nelsonii* - has a metabolically active biovolume of  $1.05 \times 10^{-14} \text{ m}^3$  (excluding the central vacuole), close to the predicted maximum due to ribosome limitations:  $1.39 \times 10^{-15} \text{ m}^3$  (32). Our precise 3D measurements on a 4.27 mm *Ca. T. magnifica* cell revealed a cytoplasm biovolume three orders of magnitude above that limit ( $5.91 \times 10^{-12} \text{ m}^3$ , Table S2). It is possible, as may be the case with *Ca. T. magnifica*, that changes in spatial organization of cellular components and rearrangement of the bioenergetic membrane system may allow some bacteria to overcome many limitations (Fig. 3C).

The origin of biological complexity is among the most important, yet unanswered, questions in biology. While most bacteria are considered small and simple, some have evolved complex innovations. Functionally diverse bacterial microcompartments are found in at least 23 phyla (34). Cyanobacteria can form multicellular centimeter long filaments and are capable of cell differentiation (35). Planctomycetes have special energy transduction organelles called anammoxosomes, a compartmentalized cell and some are even capable of phagocytosis (15, 36). The social Myxobacteria have large genomes, a complex developmental cycle and are capable of moving and feeding cooperatively in predatory groups (37). Through its gigantic cell size, its large genome, its di-morphic life cycle, but most importantly through its compartmentalization of genetic material in membrane-bound pepins, *Ca. T. magnifica* adds to the list of bacteria that have evolved a higher level of complexity. It is the first and only bacteria known to date to unambiguously segregate their genetic material in membrane-bound organelles in the manner of eukaryotes and therefore challenges our concept of a bacterial cell.

35 Confirmation bias related to viral size prevented the discovery of giant viruses for more than a century, and their ubiquity is only now being recognized (38, 39). The discovery of *Ca. T. magnifica* suggests that large and more complex bacteria may be hiding in plain sight.



Investigating their rare biology, energy metabolism and the precise role and nature of pepins, will take us a step closer in understanding the evolution of biological complexity.

**Supplementary Materials:**

Materials and Methods

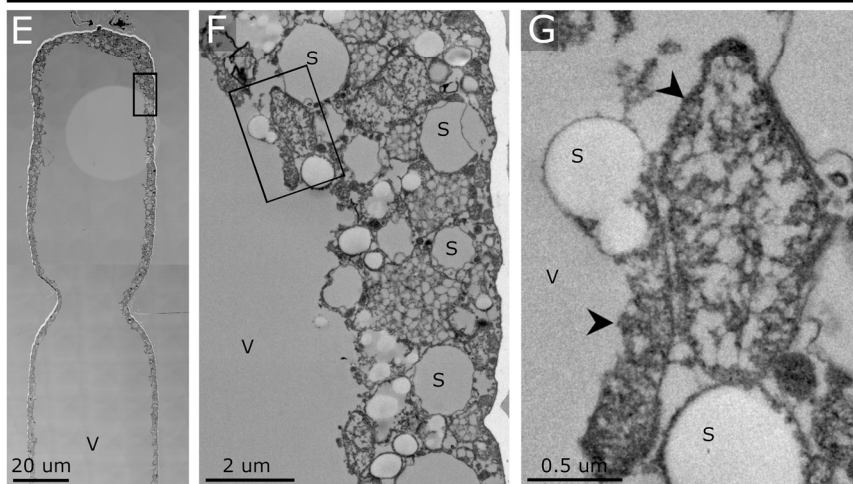
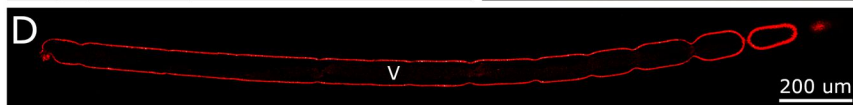
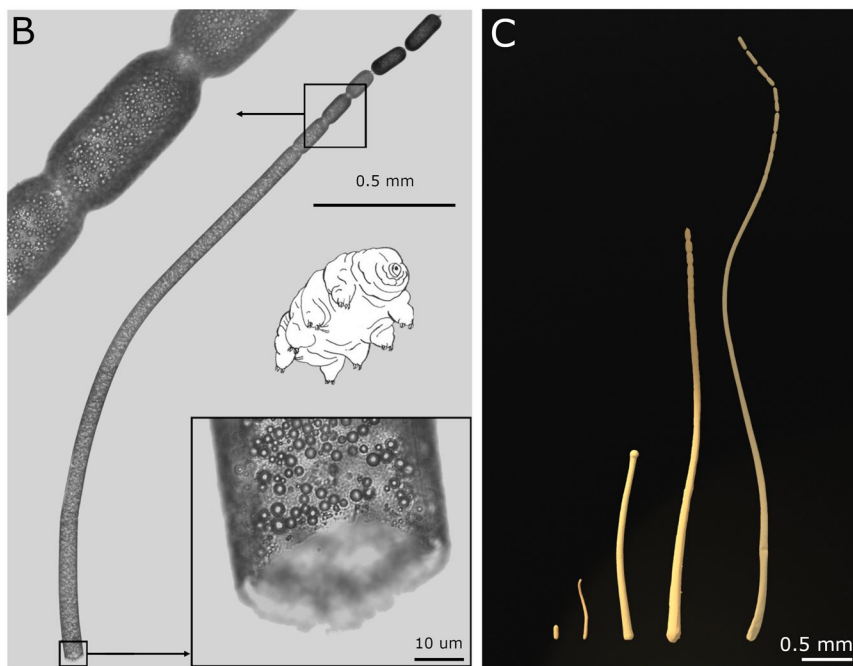
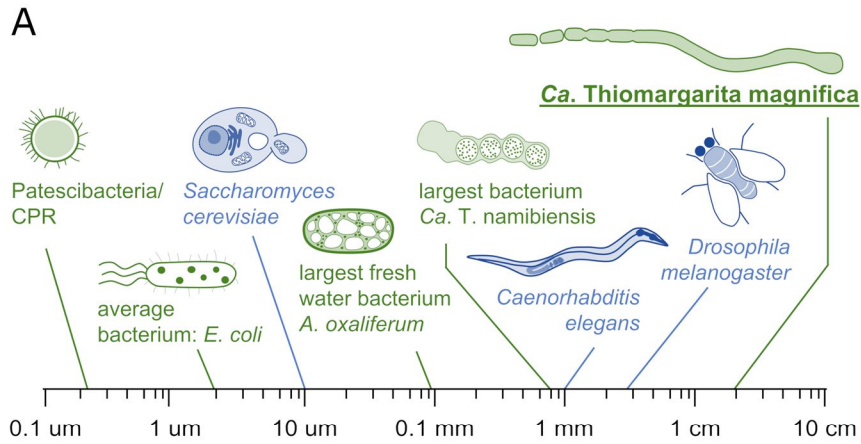
5 Supplementary text

Figures S1-S16

Tables S1-S11

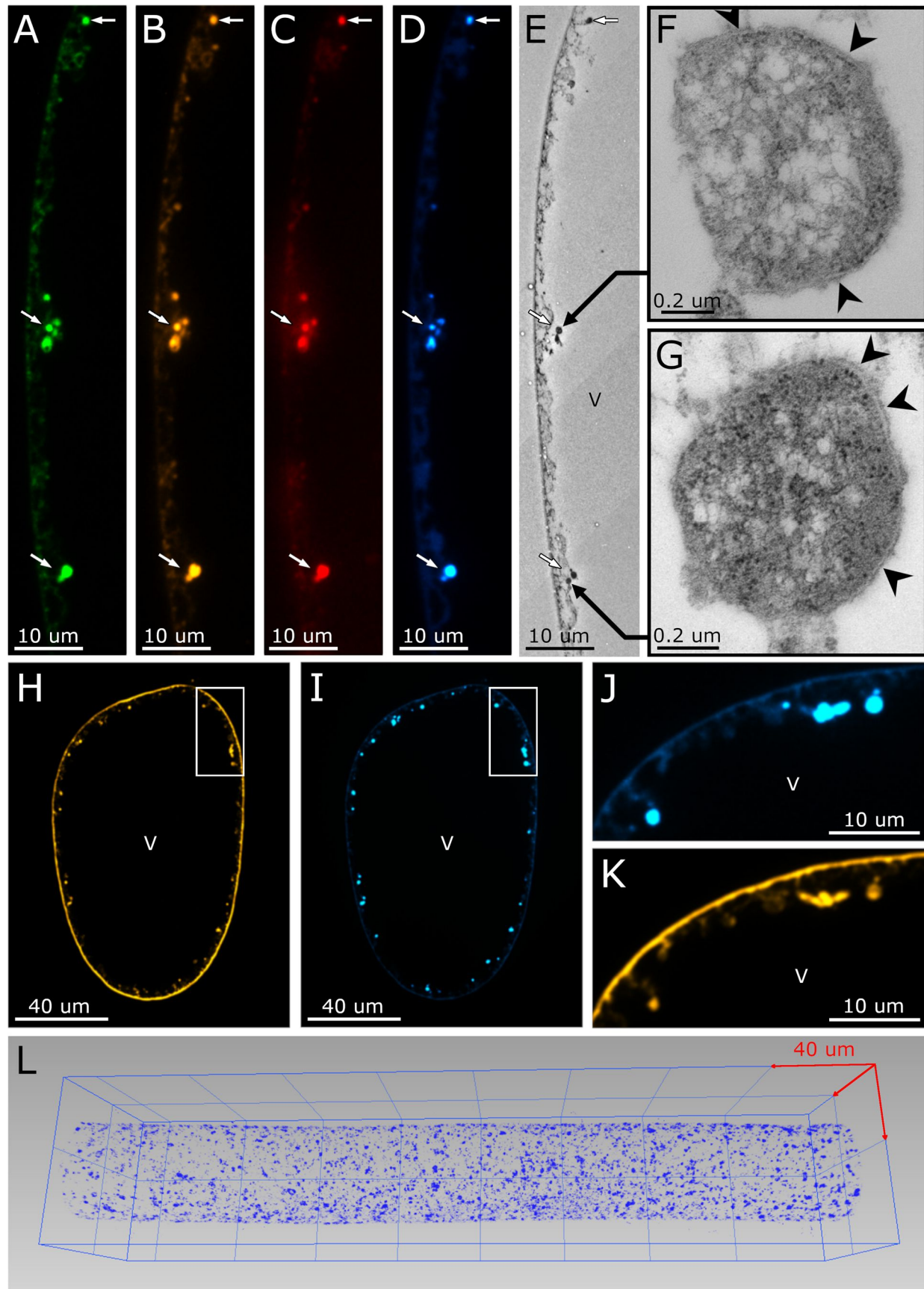
Movies S1-S6

References (1-77)



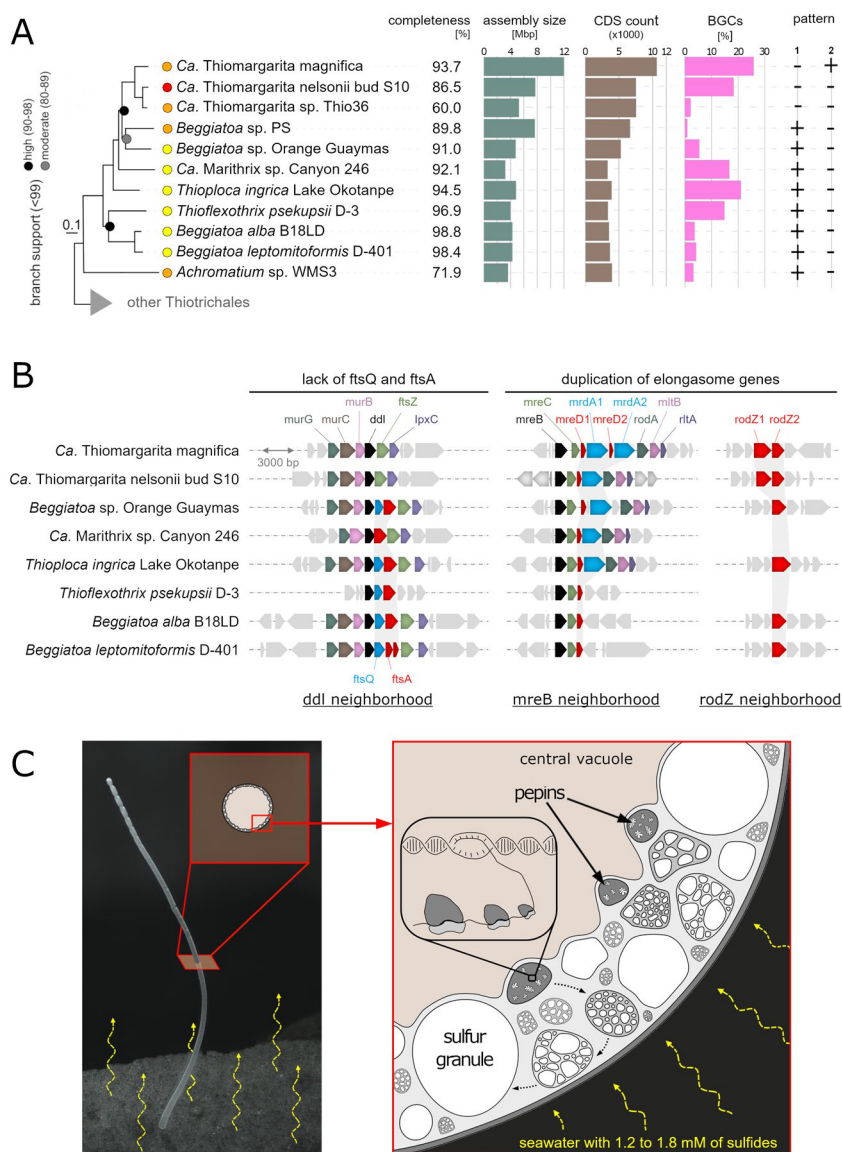


**Fig. 1. Morphology and ultrastructure of *Ca. Thiomargarita magnifica*.** A: Size comparison of selected bacterial (green) and eukaryotic (blue) model systems on a log scale. B: Light microscopy montage of the upper half of a *Ca. T. magnifica* cell, with a broken basal part revealing a tube-like morphology due to the large central vacuole and numerous spherical intracellular sulfur granules (a tardigrade is shown for scale). C: 3D rendering of segmented cells from HXT (Movies S1, S2 and S6) and CLSM (Movie S3), putatively at various stages of the developmental cycle. From left to right 3D rendered cells are cell *D*, *B*, *F*, *G*, and *D* (Table S2). Note smallest stage correspond to cell *D* terminal segment and was added to the left for visualization purposes. D: CLSM observation of cell *K* after fluorescent labeling of membranes with FM 1-43x showing the continuity of the cell from the basal pole to the first complete constriction at the apical end. E: TEM montage of the apical constriction of a cell, with the cytoplasm constrained to the periphery. F: Higher magnification of the area marked in E, with sulfur granules and pepins at various stages of development. G: Higher magnification of the area marked in E showing two pepins (arrowheads). S: sulfur granule; V: vacuole.



**Fig. 2. Characterization of the pepin organelles by Fluorescent In Situ Hybridization (FISH) and correlative Transmission Electron Microscopy (TEM) as well as membrane and DNA staining.**

A-D: Pepins (arrows) in the cytoplasm of *Ca. T. magnifica* (class gammaproteobacteria) are labeled with the general bacterial probe EUB labeled with Alexa Fluor® 488 (A, green), gammaproteobacteria specific probe Gam42a labeled with Cy3 (B, yellow), *Thiomargarita*-specific probe Thm482 labeled with Cy5 (C, red) and with DAPI (D, blue) (see Supplementary Text for details). E: TEM of a serial thin section consecutive to the semi-thin section used for FISH. The FISH and DAPI positive pepins appear as electron dense organelles under TEM. F and G: Pepins (from E) under higher magnification; pepins are delimited by a membrane (arrowheads) and contain numerous ribosomes which appear as small electron dense granules. H and I: Fluorescent labeling of membranes using FM 1-43x (H) and DNA using DAPI (I) on a cross section of a cell. The pepins labeled with DAPI are also labeled with the dye FM 1-43x confirming the presence of a membrane. J and K: Higher magnifications of the area delimited by the white rectangle in H and I. L: 3D visualization of a central portion of a cell after DAPI staining (blue) showing the multitude of DNA clusters spread throughout the cytoplasm (cell *M*, Table S2 and Movie S5).



**Fig. 3. Genome analysis and proposed model for the sub-cellular organization of *Ca. Thiomargarita magnifica*.**

**A.** Genome phylogenetic tree with added information about genome quality (red: low quality, orange: medium quality, and yellow: high quality (40)), estimated level of completeness, assembly size, CDS count, and percentage of sequence dedicated to biosynthetic gene clusters (BGCs). Pattern 1 corresponds to “complete gene cluster for cell division of model bacteria”. Pattern 2 corresponds to “*mreD*, *mrda* and *rodZ* genes are duplicated”. **B.** Gene neighborhoods centered on the *ddl*, *mreB* and *rodZ* genes showing the incomplete set of divisome genes (lack of *ftsQ* and *ftsA*) in both *Thiomargarita* species as well as the duplication of elongasome genes (*mreD*, *mrda* and *rodZ*) in *Ca. T. magnifica*. Note that *Beggiatoa* sp. PS, *Achromatium* sp. WMS3 and *Ca. Thiomargarita* sp. Thio36 draft genomes were too fragmented and were not included here. **C.** Light microscopy image and model proposed for the sub-cellular organization in *Ca. Thiomargarita magnifica* showing how the pepin organelles greatly increase the surface area of putative bioenergetic membranes.

## Additional references cited in the supplementary material:(9, 41-77)

### References and Notes:

- 5 1. A. D. Steen *et al.*, High proportions of bacteria and archaea across most biomes remain uncultured. *ISME J* **13**, 3126-3130 (2019).
2. D. Ionescu, M. Bizic, in *eLS*, L. John Wiley & Sons, Ed. (Chichester, 2019), pp. 1-10.
3. P. A. Levin, E. R. Angert, Small but Mighty: Cell Size and Bacteria. *Cold Spring Harb Perspect Biol* **7**, a019216 (2015).
- 10 4. H. N. Schulz, B. B. Jorgensen, Big bacteria. *Annu Rev Microbiol* **55**, 105-137 (2001).
5. H. N. Schulz *et al.*, Dense populations of a giant sulfur bacterium in Namibian shelf sediments. *Science* **284**, 493-495 (1999).
6. E. R. Angert, K. D. Clements, N. R. Pace, The largest bacterium. *Nature* **362**, 239-241 (1993).
7. D. C. Nelson, C. O. Wirsén, H. W. Jannasch, Characterization of Large, Autotrophic Beggiatoa spp. Abundant at Hydrothermal Vents of the Guaymas Basin. *Appl Environ Microbiol* **55**, 2909-2917 (1989).
- 15 8. M. Huettel, S. Forster, S. Kloser, H. Fossing, Vertical Migration in the Sediment-Dwelling Sulfur Bacteria Thioploca spp. in Overcoming Diffusion Limitations. *Appl Environ Microbiol* **62**, 1863-1872 (1996).
9. M. R. Jean *et al.*, Two new Beggiatoa species inhabiting marine mangrove sediments in the Caribbean. *PLoS One* **10**, e0117832 (2015).
- 20 10. J. M. Larkin, M. C. Henk, Filamentous sulfide-oxidizing bacteria at hydrocarbon seeps of the Gulf of Mexico. *Microsc Res Tech* **33**, 23-31 (1996).
11. V. Salman, J. V. Bailey, A. Teske, Phylogenetic and morphologic complexity of giant sulphur bacteria. *Antonie Van Leeuwenhoek* **104**, 169-186 (2013).
12. J. V. Bailey *et al.*, Dimorphism in methane seep-dwelling ecotypes of the largest known bacteria. *ISME J* **5**, 1926-1935 (2011).
- 25 13. S. Maier, H. Volker, M. Beese, V. A. Gallardo, The fine structure of Thioploca araucae and Thioploca chileae. *CAN. J. MICROBIOL.* **36**, 438-448 (1990).
14. E. R. Angert, DNA replication and genomic architecture of very large bacteria. *Annu Rev Microbiol* **66**, 197-212 (2012).
- 30 15. C. Greening, T. Lithgow, Formation and function of bacterial organelles. *Nat Rev Microbiol*, (2020).
16. T. Katayama *et al.*, Isolation of a member of the candidate phylum 'Atribacteria' reveals a unique cell membrane structure. *Nat Commun* **11**, 6381 (2020).
17. J. E. Mendell, K. D. Clements, J. H. Choat, E. R. Angert, Extreme polyploidy in a large bacterium. *Proc Natl Acad Sci U S A* **105**, 6730-6734 (2008).
- 35 18. E. R. Angert, Challenges faced by highly polyploid bacteria with limits on DNA inheritance. *Genome Biol Evol*, (2021).
19. D. Ionescu, M. Bizic-Ionescu, N. De Maio, H. Cypionka, H. P. Grossart, Community-like genome in single cells of the sulfur bacterium Achromatium oxaliferum. *Nat Commun* **8**, 455 (2017).
20. V. Salman-Carvalho, E. Fadeev, S. B. Joye, A. Teske, How Clonal Is Clonal? Genome Plasticity across Multicellular Segments of a "Candidatus Marithrix sp." Filament from Sulfidic, Briny Seafloor Sediments in the Gulf of Mexico. *Front Microbiol* **7**, 1173 (2016).
- 40 21. B. J. Shapiro, How clonal are bacteria over time? *Curr Opin Microbiol* **31**, 116-123 (2016).
22. T. Woyke *et al.*, One bacterial cell, one complete genome. *PLoS One* **5**, e10314 (2010).
23. B. E. Flood *et al.*, Single-Cell (Meta-)Genomics of a Dimorphic Candidatus Thiomargarita nelsonii Reveals Genomic Plasticity. *Front Microbiol* **7**, 603 (2016).
- 45 24. M. Winkel *et al.*, Single-cell Sequencing of Thiomargarita Reveals Genomic Flexibility for Adaptation to Dynamic Redox Conditions. *Front Microbiol* **7**, 964 (2016).
25. K. Chiyomaru, K. Takemoto, Revisiting the hypothesis of an energetic barrier to genome complexity between eukaryotes and prokaryotes. *R Soc Open Sci* **7**, 191859 (2020).
- 50 26. A. J. F. Egan, J. Errington, W. Vollmer, Regulation of peptidoglycan synthesis and remodelling. *Nat Rev Microbiol* **18**, 446-460 (2020).
27. S. A. Woldemeskel, E. D. Goley, Shapeshifting to Survive: Shape Determination and Regulation in Caulobacter crescentus. *Trends Microbiol* **25**, 673-687 (2017).
- 55 28. E. A. Hutchison, D. A. Miller, E. R. Angert, Sporulation in Bacteria: Beyond the Standard Model. *Microbiol Spectr* **2**, (2014).



29. D. Claessen, D. E. Rozen, O. P. Kuipers, L. Sogaard-Andersen, G. P. van Wezel, Bacterial solutions to multicellularity: a tale of biofilms, filaments and fruiting bodies. *Nat Rev Microbiol* **12**, 115-124 (2014).
30. M. Bright, S. Espada-Hinojosa, I. Lagkouvardos, J. M. Volland, The giant ciliate *Zoothamnium niveum* and its thiotrophic epibiont *Candidatus Thiobios zoothamnicoli*: a model system to study interspecies cooperation. *Front Microbiol* **5**, 145 (2014).
- 5 31. J. Dumais, K. Serikawa, D. F. Mandoli, *Acetabularia*: A unicellular model for understanding subcellular localization and morphogenesis during development. *J Plant Growth Regul* **19**, 253-264 (2000).
32. C. P. Kempes, L. Wang, J. P. Amend, J. Doyle, T. Hoehler, Evolutionary tradeoffs in cellular composition across diverse bacteria. *ISME J* **10**, 2145-2157 (2016).
- 10 33. N. Lane, W. Martin, The energetics of genome complexity. *Nature* **467**, 929-934 (2010).
34. C. A. Kerfeld, C. Aussignargues, J. Zarzycki, F. Cai, M. Sutter, Bacterial microcompartments. *Nat Rev Microbiol* **16**, 277-290 (2018).
35. E. Flores, A. Herrero, Compartmentalized function through cell differentiation in filamentous cyanobacteria. *Nat Rev Microbiol* **8**, 39-50 (2010).
- 15 36. T. Shiratori, S. Suzuki, Y. Kakizawa, K. I. Ishida, Phagocytosis-like cell engulfment by a planctomycete bacterium. *Nat Commun* **10**, 5529 (2019).
37. J. Munoz-Dorado, F. J. Marcos-Torres, E. Garcia-Bravo, A. Moraleda-Munoz, J. Perez, Myxobacteria: Moving, Killing, Feeding, and Surviving Together. *Front Microbiol* **7**, 781 (2016).
38. C. Abergel, M. Legendre, J. M. Claverie, The rapidly expanding universe of giant viruses: Mimivirus, Pandoravirus, Pithovirus and Mollivirus. *FEMS Microbiol Rev* **39**, 779-796 (2015).
- 20 39. F. Schulz *et al.*, Giant virus diversity and host interactions through global metagenomics. *Nature* **578**, 432-436 (2020).
40. R. M. Bowers *et al.*, Minimum information about a single amplified genome (MISAG) and a metagenome-assembled genome (MIMAG) of bacteria and archaea. *Nat Biotechnol* **35**, 725-731 (2017).
- 25 41. M. Mantran, R. Hamparian, J. L. Bouchereau, Geomorphology and hydrology of the manche-à-eau lagoon (guadeloupe, french west indies). *Geomorphologie Relief Processus Environ.*, 199-210 (2009).
42. A. M. Glauert, *Fixation, dehydration and embedding of biological specimens. Practical methods in electron microscopy.* (North-Holland, Amsterdam, 1975).
43. K. L. McDonald, Rapid embedding methods into epoxy and LR White resins for morphological and immunological analysis of cryofixed biological specimens. *Microsc Microanal* **20**, 152-163 (2014).
- 30 44. T. Muller-Reichert, H. Hohenberg, E. T. O'Toole, K. McDonald, Cryoimmobilization and three-dimensional visualization of *C. elegans* ultrastructure. *J Microsc* **212**, 71-80 (2003).
45. J. R. Kremer, D. N. Mastrorade, J. R. McIntosh, Computer visualization of three-dimensional image data using IMOD. *J Struct Biol* **116**, 71-76 (1996).
- 35 46. J. Schindelin *et al.*, Fiji: an open-source platform for biological-image analysis. *Nat Methods* **9**, 676-682 (2012).
47. P. J. Miranda, N. K. McLain, R. Hatzenpichler, V. J. Orphan, J. G. Dillon, Characterization of Chemosynthetic Microbial Mats Associated with Intertidal Hydrothermal Sulfur Vents in White Point, San Pedro, CA, USA. *Front Microbiol* **7**, 1163 (2016).
- 40 48. K. M. Kalanetra, S. L. Huston, D. C. Nelson, Novel, attached, sulfur-oxidizing bacteria at shallow hydrothermal vents possess vacuoles not involved in respiratory nitrate accumulation. *Appl Environ Microbiol* **70**, 7487-7496 (2004).
49. W. Manz, R. Amann, W. Ludwig, M. Wagner, K. H. Schleifer, Phylogenetic Oligodeoxynucleotide Probes for the Major Subclasses of Proteobacteria: Problems and Solutions. *Syst. Appl. Microbiol.* **15**, 593-600 (1992).
- 45 50. H. Daims, A. Bruhl, R. Amann, K. H. Schleifer, M. Wagner, The domain-specific probe EUB338 is insufficient for the detection of all Bacteria: development and evaluation of a more comprehensive probe set. *Syst Appl Microbiol* **22**, 434-444 (1999).
51. S. Grunke *et al.*, Novel observations of *Thiobacterium*, a sulfur-storing Gammaproteobacterium producing gelatinous mats. *ISME J* **4**, 1031-1043 (2010).
- 50 52. G. Wallner, R. Amann, W. Beisker, Optimizing fluorescent in situ hybridization with rRNA-targeted oligonucleotide probes for flow cytometric identification of microorganisms. *Cytometry* **14**, 136-143 (1993).
53. N. Le Bris, P. M. Sarradin, S. Pennec, A new deep-sea probe for in situ pH measurement in the environment of hydrothermal vent biological communities. *Deep-Sea Res. Part I Oceanogr. Res. Pap.* **48**, 1941-1951 (2001).
- 55



54. F. J. Millero, S. Hubinger, M. Fernandez, S. Garnett, Oxidation of H<sub>2</sub>S in seawater as a function of temperature, pH, and ionic strength. *Environ Sci Technol* **21**, 439-443 (1987).
55. A. P. Arkin *et al.*, KBase: The United States Department of Energy Systems Biology Knowledgebase. *Nat Biotechnol* **36**, 566-569 (2018).
56. F. B. Yu *et al.*, Microfluidic-based mini-metagenomics enables discovery of novel microbial lineages from complex environmental samples. *Elife* **6**, (2017).
57. E. A. Eloë-Fadrosch *et al.*, Global metagenomic survey reveals a new bacterial candidate phylum in geothermal springs. *Nat Commun* **7**, 10476 (2016).
58. I. A. Chen *et al.*, IMG/M v.5.0: an integrated data management and comparative analysis system for microbial genomes and microbiomes. *Nucleic Acids Res* **47**, D666-D677 (2019).
59. K. Katoh, D. M. Standley, A simple method to control over-alignment in the MAFFT multiple sequence alignment program. *Bioinformatics* **32**, 1933-1942 (2016).
60. A. Criscuolo, S. Gribaldo, BMGE (Block Mapping and Gathering with Entropy): a new software for selection of phylogenetic informative regions from multiple sequence alignments. *BMC Evol Biol* **10**, 210 (2010).
61. B. Q. Minh *et al.*, IQ-TREE 2: New Models and Efficient Methods for Phylogenetic Inference in the Genomic Era. *Mol Biol Evol* **37**, 1530-1534 (2020).
62. I. Letunic, P. Bork, Interactive tree of life (iTOL) v3: an online tool for the display and annotation of phylogenetic and other trees. *Nucleic Acids Res* **44**, W242-245 (2016).
63. K. Blin *et al.*, antiSMASH 6.0: improving cluster detection and comparison capabilities. *Nucleic Acids Res* **49**, W29-W35 (2021).
64. J. Mistry *et al.*, Pfam: The protein families database in 2021. *Nucleic Acids Res* **49**, D412-D419 (2021).
65. M. Kanehisa, Y. Sato, M. Kawashima, M. Furumichi, M. Tanabe, KEGG as a reference resource for gene and protein annotation. *Nucleic Acids Res* **44**, D457-462 (2016).
66. J. V. Bailey, B. E. Flood, E. Ricci, N. Delherbe, Imaging of Cellular Oxidoreductase Activity Suggests Mixotrophic Metabolisms in *Thiomargarita* spp. *mBio* **8**, (2017).
67. J. M. Volland *et al.*, NanoSIMS and tissue autoradiography reveal symbiont carbon fixation and organic carbon transfer to giant ciliate host. *ISME J* **12**, 714-727 (2018).
68. L. C. Maurin, D. Himmel, J. L. Mansot, O. Gros, Raman microspectrometry as a powerful tool for a quick screening of thiotrophy: an application on mangrove swamp meiofauna of Guadeloupe (F.W.I.). *Mar Environ Res* **69**, 382-389 (2010).
69. J. E. Galan, G. Waksman, Protein-Injection Machines in Bacteria. *Cell* **172**, 1306-1318 (2018).
70. D. Salomon *et al.*, Marker for type VI secretion system effectors. *Proc Natl Acad Sci U S A* **111**, 9271-9276 (2014).
71. D. Zhang, R. F. de Souza, V. Anantharaman, L. M. Iyer, L. Aravind, Polymorphic toxin systems: Comprehensive characterization of trafficking modes, processing, mechanisms of action, immunity and ecology using comparative genomics. *Biol Direct* **7**, 18 (2012).
72. M. Kamruzzaman, A. Y. Wu, J. R. Iredell, Biological Functions of Type II Toxin-Antitoxin Systems in Bacteria. *Microorg.* **9**, (2021).
73. L. Aravind, E. V. Koonin, Classification of the caspase-hemoglobinase fold: detection of new families and implications for the origin of the eukaryotic separins. *Proteins* **46**, 355-367 (2002).
74. T. Dierks *et al.*, Molecular basis for multiple sulfatase deficiency and mechanism for formylglycine generation of the human formylglycine-generating enzyme. *Cell* **121**, 541-552 (2005).
75. M. Gerdol, M. Sollitto, A. Pallavicini, I. Castellano, The complex evolutionary history of sulfoxide synthase in ovolith biosynthesis. *Proc Biol Sci* **286**, 20191812 (2019).
76. S. Ferstl *et al.*, Nanoscopic X-ray tomography for correlative microscopy of a small meiofaunal sea-cucumber. *Sci Rep* **10**, 3960 (2020).
77. R. Glueckert *et al.*, Visualization of the Membranous Labyrinth and Nerve Fiber Pathways in Human and Animal Inner Ears Using MicroCT Imaging. *Front Neurosci* **12**, 501 (2018).

50

**Acknowledgments:** We are thankful for the following centers where the electron microscopy analyses were performed: i) the *Centre Commun de Caractérisation des Matériaux des Antilles et de la Guyane* in Guadeloupe, F.W.I., ii) the *Electron Microscopy Lab* (EML) of the University of California Berkeley, iii) the *Electron Microscopy Resource in Donner* at LBNL, Berkeley, and  
5 iiiii) the *FEI Eindhoven center*. We are particularly grateful to Daniel Jorgens at EML for advice and assistance in electron microscopy sample preparation and data collection. The x-ray tomography data were acquired at the *Stanford Nano Shared Facilities* in Stanford University, Palo Alto, California and we are particularly grateful to Arturas Vailionis for his technical support during HXT scan acquisitions. The confocal microscopy observations were performed at  
10 the *Advanced Microscopy Facility* at LBNL, Berkeley, California. Preliminary confocal microscopy observations were acquired at the *IBPS imaging facility* which is supported by “Conseil Regional d’Ile-de-France”. We are grateful to Sebastien Volland for his help with 3D rendering animations and to Heather Maughan for English editing of this manuscript.

### **Funding:**

John Templeton Foundation grant 60973 (JMV, SVD, TT)

Gordon and Betty Moore Foundation grant GBMF7617 (JMV, SVD, TT)

DARPA award No. HR001120036 (JMV, SVD, TT)

DOE Office of Science Contract No. DE-AC02-05CH11231 (TW, FS, TT, JMV)

20 Region Guadeloupe, F.W.I. grant (MRJ)

### **Author contributions following the [CRediT](#) model:**

Conceptualization: OG, SGR, JMV, TW, SVD, FS, RRM, NI, TT, NHE

Methodology: OG, TT, JMV, SVD, SGR, DG, NN, RRM, TW, CGR, SBK

25 Formal analysis: JMV, SGR, FS, NI, DU, OG

Investigation: JMV, SGR, OG, TT, FS, DU, DG, NN, NI, CGR, SBK, NHE, MRJ

Data curation: NI, FS, JMV, DU, SGR

Visualization: OG, SGR, JMV, FS, NI, DU

Resources: KMD, TW, RRM, OG, JLM, NHE, NJM

30 Supervision: OG, TW, SVD

Funding acquisition: TW, SVD, OG, JLM

Writing – original draft: JMV

Writing – review & editing: JMV, SGR, OG, TW, SVD, EA, NI, RRM

35 **Competing interests:** SVD also serves as the CEO of Sample Exchange. All other authors declare no competing interests.

**Supplementary Materials:**

Materials and Methods

Supplementary text

Figures S1-S16

5 Tables S1-S11

Movies S1-S6

References (1-77)

## Supplementary Materials for

### **A centimeter-long bacterium with DNA compartmentalized in membrane-bound organelles**

5 Jean-Marie Volland, Silvina Gonzalez-Rizzo, Olivier Gros, Tomáš Tylml, Natalia Ivanova, Frederik Schulz, Danielle Goudeau, Nathalie H Elisabeth, Nandita Nath, Daniel Udvary, Rex R Malmstrom, Chantal Guidi-Rontani, Susanne Bolte-Kluge, Karen M Davies, Maïtena R Jean, Jean-Louis Mansot, Nigel J Mouncey, Esther Angert, Tanja Woyke, Shailesh V Date

10 **This PDF file includes:**

Materials and Methods  
Supplementary Text  
15 Figs. S1 to S16  
Tables S1 to S11  
Captions for Movies S1 to S6

**Other Supplementary Materials for this manuscript include the following:**

20 Movies S1 to S6

## Materials and Methods

### Sampling

5 Samples of Large Sulfur Bacteria (LSB) were collected from a marine mangrove environment (ambient temperature 28°C) in “La manche à eau” in Guadeloupe, Lesser Antilles, at one site (16°16'40"N, 61°33'28"W) (41). Sunken  
leaves of *Rhizophora mangle* containing LSB were sampled by hand from the surface layer of the sediment (c. 1 m  
depth). Living LSB samples were processed within 1 h after collection under a dissecting microscope. The samples  
were then washed with 0.22 µm filtered seawater prior to use for molecular experiments. Individual bacteria were  
10 fixed at 4°C either for 4 hours in 4% paraformaldehyde in sterile seawater, or in 2.5% glutaraldehyde in 0.1 M  
cacodylate buffer (pH 7.2), which was made iso-osmotic (900 mOsmoles) with sea water by the addition of sodium  
chloride and calcium chloride. Samples were stored at 4°C until analysis.

### Light microscopy

15 Samples were observed live or fixed under standard stereomicroscopes. If applicable, a series of images captured at  
different focus distances was merged using the focus stacking software Helicon Focus® (Fig. S1). Fixed samples were  
also observed using a light microscope Axio Observer.D1 (Carl Zeiss, Jena, Germany) equipped with a black-and-  
white high-resolution camera (AxioCam MRm, Carl Zeiss, Jena, Germany).

### Ultrastructural analysis

20 For conventional SEM analysis, samples were briefly rinsed in the cacodylate buffer and then dehydrated through a  
graded acetone series before drying under CO<sub>2</sub> using a critical point dryer machine (EM CPD300, Leica). The samples  
were then sputter-coated with gold (Sputter Coater SC500, BioRad) before observation at 20 kV with an FEI Quanta  
250 scanning electron microscope.

25 For scanning transmission electron microscopy (STEM) analysis, prefixed bacterial filaments were washed twice in  
0.1 M sodium cacodylate buffer to remove aldehydes before fixation in 1% osmium tetroxide for 45 min at room  
temperature. Samples were then rinsed in distilled water and post-fixed with 2% aqueous uranyl acetate for 1 h at  
room temperature. After three washes with distilled water, each sample was dehydrated through a graded acetone  
series and embedded in Epon-Araldite according to Glauert (1975) (42). Thin sections (60 nm thick) were stained for  
contrast for 30 min in 2% aqueous uranyl acetate before examination with a Quanta 250 (FEI - STEM Mode).

30 For Transmission Electron Microscopy (TEM) observations, glutaraldehyde fixed samples were washed in a  
cacodylate buffer and post-fixed with osmium tetroxide as described above. They were then cryo-immobilized using  
a BAL-TEC HPM 010 high-pressure freezer and further placed in a freeze-substitution medium made of 1% osmium  
tetroxide, 0.1% uranyl acetate, and 5% ddH<sub>2</sub>O in acetone. The samples were freeze-substituted following the super  
quick procedure described in McDonald (2011) (43). The substitution medium was washed away with pure acetone  
and the samples were infiltrated and flat-embedded in Epon-Araldite resin as described in Müller-Reichert et al. (2003)  
35 (44). Thin sections of 70 nm were mounted on formvar coated slot grids and stained for 4 min in 2 % uranyl acetate  
followed by 4 min in Reynolds Lead Citrate. Slot grids were observed with a FEI Tecnai 12 or a Jeol 1400FLASH  
TEM. Montages were acquired either manually or automatically using the SerialEM software. Tile images were  
assembled either manually using GIMP, or with the Etomo program from the Imod suite (45), or with the software  
Image Composite Editor (Microsoft), or with the FIJI package on ImageJ (46). Morphometric measurements were  
40 performed using FIJI. The average thickness of the cytoplasm was obtained from 118 measurements realized on  
sections from three different cells (cell 1: n = 51; cell 2: n = 17; cell 3: n = 50). The average diameter of the elemental  
sulfur granules was obtained from 338 measurements realized on sections from three different cells (cell 1: n = 103;  
cell 2: n = 31; cell 3: n = 204). The average diameter of pepins was obtained from 92 measurements realized on  
sections from five different cells (cell 1: n = 8; cell 2: n = 29; cell 3: n = 20; cell 4: n = 5; cell 5: n = 30).

### Elemental analysis

The elemental composition of fully hydrated samples was analyzed using an Environmental Scanning Electron Microscope (ESEM). The dehydration step was avoided because the elemental sulfur S<sub>8</sub> is soluble in alcohol and acetone. The samples were fixed in 2.5% glutaraldehyde in seawater and kept in the same solution until examination. Samples were simply washed quickly in distilled water to remove salts and then introduced to an ESEM (FEI Quanta FEG) under a pressure of 650 Pa. ESEM studies were carried out using various acceleration voltages to reveal the presence of sulfur in the samples, as well as their morphology. We used 1) 15 kV for back scattered electron images (Z contrast) and energy dispersive X-ray spectroscopy (analyses and elemental mapping) and 2) 3 kV for secondary electron images (sample morphology).

### Confocal Laser Scanning Microscopy (CLSM)

Paraformaldehyde-fixed *Ca. T. magnifica* cells (n=8) were washed three times in sterile seawater, dehydrated through an ascending ethanol series - to dissolve elemental sulfur granules - and rehydrated through a descending ethanol series. Individual cells were transferred onto glass slides equipped with Gene Frame (ThermoFisher) to avoid crushing the cells with the coverslips. Membrane labeling of cells was carried out using the lipophilic dye FM 1-43x (Molecular Probes, Eugene, OR, USA) according to the manufacturer's protocol. DNA was labelled with DAPI (4',6-Diamidino-2-phenylindole dihydrochloride; Millipore Sigma) following the manufacturer's protocol. We imaged 8 cells on a Zeiss LSM 710 microscope by acquiring multiple overlapping Z-stack images (tiles) with the Zen software (Zeiss). From these 8 cells, 6 were imaged in their entire length (cells F to K, see Table S2) and were used to confirm the single cell nature of the filaments, measure precise morphometric parameters (length, minimum and maximum diameters), and assess ploidy level for one of them. The remaining 2 cells were imaged only partially (cells L and M, see Table S2) and used exclusively to assess the ploidy level by counting DAPI signal clusters. As positive controls, we followed the same protocol and prepared multicellular filaments of the Cyanobacteria *Microcoleus vaginatus* from a pure culture, *Beggiatoa*-like filaments collected in a Guadeloupe mangrove, and *Marithrix*-like filaments collected at the White Point Beach hydrothermal vent (47, 48) (Fig. S4; Movie S4). All 3D data sets were imported into the ORS Dragonfly software for stitching, 3D rendering and morphometric analyses and/or ploidy analysis. Three cells observed in their entirety with high lateral resolution (cells F, G and H) were segmented using the ORS Dragonfly deep learning tool and manual segmentation tools. Precise volumes of the central vacuole and the cytoplasm were measured (see Table S2).

### Hard x-ray computed tomography

We used hard x-ray computed tomography to visualize six cells in three dimensions with isotropic resolution. Four cells were observed in their entirety and two were observed only partially (see Table S2). *Ca. T. magnifica* cells fixed with glutaraldehyde and post-fixed with osmium tetroxide, as described above, were washed three times in sterile seawater, dehydrated through ascending ethanol series and stored in 70 % ethanol at 4° C. Before analysis, cells were re-hydrated and immobilized inside plastic capillaries with 1 % low melting point agarose. After sealing the capillaries on both ends, we glued them onto the head of a sewing pin and imaged them in a Zeiss Xradia 520 Versa x-rays microscope. The technical details of each scan are provided in Table S1. The CT scans were reconstructed using the Zeiss software and further imported in the ORS Dragonfly software for stitching of the tiles, segmentation and analysis. Four cells were observed in their entirety (cells A, B, D and E), three of which were segmented using the ORS Dragonfly deep learning tool and manual segmentation tools. Precise total volumes of the cells were measured and for one of them (cell D) the volumes of the cytoplasm and central vacuole were measured as well (see Table S2).

### Fluorescent in situ hybridization (FISH) and TEM correlation

Paraformaldehyde fixed cells (n=4) were washed in seawater before dehydration through an ascending ethanol series. We then infiltrated the cells with medium grade LR-White resin. LR-White embedded cells were polymerized at 40 °C under anaerobic conditions for three days. We analyzed with FISH a total of 84 semi-thin sections (500 nm), coming from 7 different areas analyzed in triplicates within each of the four cells. Sections were mounted on PTFE coated microscope glass slides (Electron Microscopy Sciences, Hatfield, PA) and analyzed with FISH. Some consecutive thin sections (70 nm) were prepared for correlative TEM as described in the ultrastructural analysis section. The FISH hybridization solution (0.9 mol L<sup>-1</sup> NaCl, 20 mmol L<sup>-1</sup> Tris/HCl pH 8.0, 0.01% SDS, 10% formamide) was applied onto the section in a 20 µL drop containing 0.5 µM of each oligonucleotide probe. Hybridization was performed in a humid chamber at 46°C for 3 h. Washing was performed under stringent conditions



at 48°C for 15 min (49). We used a combination of a eubacterial probe mixture (EUB338 Alexa Fluor® 488 single labeled) (50), a general gammaproteobacteria probe (Gam42a Cy3 double-labeled) (49), an unlabeled competitor probe (BET42a) (49) and a genus-specific *Thiomargarita* probe (Thm482, Cy5 double-labeled) (51). Nonsense probes (Non-EUB) (52) labeled in Cy3 and Cy5 were also applied to all slides to control for false positive signals due to autofluorescence or nonspecific probe binding, but no signals were observed in these controls. We mounted the FISH slides with antifadent solution CitiFluor AF1 Plus DAPI (Electron Microscopy Sciences, Hatfield, PA). Micrographs were taken using a 63x oil-immersion objective on an Inverted epifluorescence microscope (Axio Observer.D1, Carl Zeiss, Jena, Germany) equipped with a black-and-white high-resolution camera (AxioCam MRm, Carl Zeiss, Jena, Germany). FISH images were overlaid with their corresponding TEM observations in the GIMP software.

## Sulfide measurements

Sunken leaves with attached elongated cells were brought to the laboratory and placed in a mesocosm mounted the day before measurement to simulate their mangrove environment. The samples were collected from the field on the day of measurement. Sulfide measurements were carried out using H<sub>2</sub>S100 microsensors (Unisense®) attached to a micromanipulator (type MD4 Rechts, Märzhäuser®). One microsensor was placed into the water column 5 cm above the bacterial cells and the other positioned in the middle of the LSB “bouquet” attached onto a submerged leaf of *Rhizophora mangle*. The measurements were recorded every 30 s using SensorBasic® software. Calibrations were performed according to the Unisense® instructions. The pH was measured with an autonomous probe (NKE), similar to that described by Le Bris *et al.*, (2001) (53), fixed to the micromanipulator. Total sulfide concentrations ( $S^{2-}_{tot} = H_2S + HS^- + S^{2-}$ ) were calculated, accounting for the measured pH and salinity using a pK of 6.51 (54).

## Genome sequencing, assembly, binning and annotation

We processed five *Ca. T. magnifica* filaments for single-cell genomic sequencing. Within one hour after sampling, we dissected individual cells out of the decaying leaf and washed them three times in sterile seawater before storing them at -80°C. We thawed each individual filament and immediately amplified the genomic DNA by multiple displacement amplification using the REPLI-g kit (Qiagen). DNA libraries were created from 200pg of DNA from each of the amplified products using Nextera XT DNA library creation kit (Illumina). We sequenced the DNA libraries on an Illumina Nextseq High Output platform. We then imported pair-end reads (2x150 bp) into the KBase platform ([www.kbase.us](http://www.kbase.us)) (55). In KBase, we used SPAdes (v3.13.0) to assemble reads into contigs of at least 500 bp (using kmers of 33, 67, 99, 125 bp). We then binned contigs over 2000 bp using MetaBAT2 resulting in 2 to 6 bins per filament (see Supplementary Table 3). Only one bin per filament was taxonomically identified as *Thiomargarita* by the GTDB-Tk classify app (v0.1.4). We extracted the contigs from the *Thiomargarita* bin and treated them as an assembly for further analyses (referred to as: filament n *Ca. T. magnifica* genome). We assessed genome qualities with CheckM (v1.0.18).

## Genome analysis

### Average Nucleotide Identities and clonality

We choose filament #5 as a reference genome based on its better assembly statistics. We computed pairwise Average Nucleotide Identities (ANIs) with FastANI. We assessed within filament clonality by mapping the reads from filament #1, #2, #3 and #4 onto filament #5 genome using BBMap (v38.79) (<https://sourceforge.net/projects/bbmap/>) with the flags `minid=0.95 minaveragequality=30`, and called variants with the BBTools scripts `pileup.sh` and `callvariants.sh` and the flags `minreads=2 minquality=30 minscore=30 minavgmapq=20 minallelefrac=0.1`.

### Phylogenomics

A set of 56 universal single copy marker proteins (56, 57) was used to build a phylogenetic tree of the filament assemblies and related gammaproteobacterial genomes available in the IMG/M database (58). Marker proteins were identified with `hmmsearch` (version 3.1b2, [hmmer.org](http://hmmer.org)) using a specific HMM for each of the markers. For every marker protein, alignments were built with MAFFT (v7.294b) (59) and subsequently trimmed with BMGE (60) using BLOSUM30. Single protein alignments were then concatenated and maximum likelihood phylogenies were inferred with `iq-tree v2.0.3` (61) using the LG4X+F model. The tree was visualized in `itol` (62).

## Secondary metabolism

Bacterial genomes were analyzed for secondary metabolite Biosynthetic Gene Clusters (BGCs) with antiSMASH v5.1.2 (63). Fungal BGC data for the fungus model system *Aspergillus nidulans* were retrieved from antismash-db. %BGC was calculated by summing the nucleotide length of each antiSMASH BGC region and dividing by total genome size.

5

## Genome annotation and functional analysis

*Ca. T. magnifica* genomes were annotated using a JGI prokaryotic structural and functional genome annotation pipeline (<https://img.jgi.doe.gov/docs/pipelineV5/>) and loaded into IMG/MER database (58). Assignments of proteins to protein families, such as Pfam v.30 (64) and KEGG v.77.1 (65) in conjunction with the tools provided by IMG user interface were used to infer functional capabilities encoded by the genomes and to visualize chromosomal neighborhoods of genes of interest. Protein sequences of interest were exported from IMG/MER and alignments were built with MAFFT (v7.294b) (59).

10

## Supplementary Text

### Evidence of thiotrophy in *Ca. T. magnifica*

5 Mangrove swamps accumulate fine sediment with high organic content. Under anoxic conditions sulfate reducing  
bacteria degrade organic matter producing large amounts of sulfide and sustaining sulfur oxidizing  
chemoautotrophic (thiotrophic) microbial communities. In Guadeloupean mangroves, sulfide produced by the  
reduced sediment ranges from 0.19 mM to 2.40 mM (9). It passively diffuses to the overlaying water where it gets  
rapidly oxidized by oxygen creating a steep redox gradient at the sediment/water interface. In order to characterize  
10 the microenvironment of *Ca. T. magnifica*, we brought to the laboratory filaments still attached to sunken leaves and  
immersed the leaves in a mesocosm-like setup on top of reduced mangrove sediment. Using microsensors we  
measured high and relatively stable concentrations of reduced sulfur species in the microenvironment of the  
filaments with concentrations fluctuating between 1.20 to 1.79 mM (Fig. S10) while no sulfide was detectable in the  
overlaying water.

15 Genomics and oxidoreductase activity experiments have shown that other *Thiomargarita* spp. can use reduced sulfur  
species as electron donors (23, 24, 66). Thiotrophic gammaproteobacteria from sulfidic environments are known to  
store elemental sulfur in membrane bound vesicles (67, 68). In order to determine if *Ca. T. magnifica* filaments  
display an active thiotrophic metabolism, we placed lightly fixed fully hydrated cells in an environmental scanning  
electron microscope and interrogated the presence of internal sulfur granules using Energy Dispersive X-ray  
Spectroscopy (EDXS). Images collected by secondary and backscattered electron detectors clearly showed the  
20 presence of bright round-shaped areas of on average  $2.33 \pm 0.46 \mu\text{m}$  in diameter (Fig. S10B and C). EDXS  
microanalysis (Fig. S10A) and sulfur mapping (Fig. S10F) clearly show that these areas are sulfur-rich and therefore  
correspond to sulfur globules (also visible on the TEM as numerous electron lucent vesicles  $2.40 \pm 1.03 \mu\text{m}$  in  
diameter).

### Estimation of the genome copy number

25 We analyzed in 3D three datasets coming from three different cells after DNA was fluorescently labeled with DAPI.  
We visualized an entire 2.39 mm long cell (cell H, Table S2), as well as two cell portions of 195  $\mu\text{m}$  (cell L, Table  
S2) and 660  $\mu\text{m}$  (cell M, Table S2). After segmentation of the DNA clusters labeled with DAPI, we used the ORS  
Dragonfly© multi-ROIs analysis tool and counted 7647, 1518 and 3910 individual objects for the three cells  
30 respectively. The volume of individual DNA clusters ranged from 0.48 to 3511  $\mu\text{m}^3$ . We assumed that the smallest  
DAPI stained DNA clusters, with a volume of 0.48  $\mu\text{m}^3$ , represented a single genome copy and observed that larger  
clusters represented multiple chromosomes too close to one another to be segmented as individual objects.  
Therefore, we divided larger DNA clusters by the volume of the smallest ones (0.48  $\mu\text{m}^3$ ) and estimated the total  
number of genome copies for each data set. We then divided the total number of genome copies by the length of the  
35 cell analyzed allowing us to express the polyploidy level per millimeter of filament and extrapolate to a fully grown  
20 mm long cell (see Table S2). We estimated that *Ca. T. magnifica* cells present on average  $36,880 \pm 7,956$   
genome copies per millimeter of filament and extrapolated that fully grown 20 mm cells would therefore present  
 $737,598 \pm 159,115$  genome copies.

### FISH investigations

40 The specificity of the FISH probe Thm482 was confirmed by the TestProbe tool from the SILVA database. In  
addition, we extracted all 16S rRNA gene sequences from the published *Thiomargarita* metagenome as well as from  
our five *Ca. T. magnifica* single-cell assemblies and further confirmed that the Thm482 probe only matched the  
*Thiomargarita* 16S rRNA sequence.

45 The FISH investigations were conducted on 4 different cells. From each cell, triplicate sections from 7 different  
locations consistently showed the same results, representative exemplars of which are shown in Figs. 2 and S6 to S8.

### **Extended description of *Ca. T. magnifica* metabolism based on the genome analysis**

5 The large genomes of *Ca. T. magnifica* filaments encoded a wide range of metabolic capabilities, some unique and some shared with other large sulfur-oxidizing bacteria. A complete glycolysis pathway was present, which included a gene for glucose-6-phosphate isomerase; this gene was reported to be absent from previously sequenced single cells of *Ca. T. nelsonii* (Table S9) (24). The tricarboxylic acid cycle is also complete and can partially function in both directions due to the presence of 2-oxoglutarate dehydrogenase complex and 2-oxoglutarate-ferredoxin oxidoreductase, as well as succinate dehydrogenase and fumarate reductase. Multiple anaerobic enzymes are also encoded (Table S9). *Ca. T. magnifica* genomes encoded RuBisCO form I (Fig.S12) and other enzymes for carbon fixation via the Calvin–Benson–Bassham (CBB) cycle. Similar to *Ca. T. nelsonii*, sedoheptulose-1,7-bisphosphatase and the fructose-1,6-bisphosphatase were missing and may have been replaced by a polyphosphate-dependent 6-phosphofructokinase (24).

15 While *Ca. T. nelsonii* were found to perform denitrification or dissimilatory and assimilatory reduction of nitrate to ammonia, the only enzymes found in *Ca. T. magnifica* genomes were dissimilatory/respiratory nitrate reductases, Nar and Nap. Although there were genes encoding proteins similar to NorD and NorQ, accessory proteins of nitric oxide reductase, its catalytic subunits NorCB were missing, and so were genes encoding assimilatory nitrate reductase, both types of nitrite reductase (NirBD and NirS), and nitrous oxide reductase. Instead, a complete set of urease subunits was present (Table S9). This suggests that *Ca. T. magnifica* likely obtains ammonia for growth from organic sources, whereas nitrate is used exclusively as an electron acceptor.

20 Like other large sulfur-oxidizing bacteria, *Ca. T. magnifica* genomes encoded a set of genes for sulfur and hydrogen oxidation. Genes encoding two Ni-Fe hydrogenases with a complement of accessory proteins were found. Both sulfide-quinone-oxidoreductase Sqr and flavocytochrome c sulfide dehydrogenase FccAB were present, reverse dissimilatory sulfite reductase pathway, as well as thiosulfate-oxidizing sox genes. As in *Ca. T. nelsonii*, a group I catalytic intron was inserted into the *Ca. T. magnifica dsrA* gene encoding alpha subunit of dissimilatory sulfite reductase (23). *Ca. T. magnifica* genomes encoded a branched respiratory electron transport chain, which included NADH dehydrogenase, succinate dehydrogenase, ubiquinol-cytochrome c reductase, cbb3-type cytochrome c oxidase, and cytochrome d ubiquinol oxidase, as well as heterodisulfide reductase and sodium-transporting Rnf complex. The genomes also encoded both F-type and V-type ATPases.

30 In addition to the common bacterial secretion systems, a type VI secretion system (T6SS) was present in all *Ca. T. magnifica* genomes (Table S10), and some of its components were found in *Ca. T. nelsonii*. Often found in bacterial pathogens, this secretion system is analogous to contractile tails of bacteriophages and is known to mediate contact-dependent killing of neighboring cells via intracellular delivery of toxic effectors (69). T6SS consists of an inner tube composed of Hcp protein capped with VgrG and proline-alanine-alanine-arginine (PAAR) repeat-containing proteins surrounded by a sheath made of TssB/TssC heterodimers (also known as ImpB/ImpC or VipB/VipC). Other components of T6SS include a transmembrane complex composed of three subunits, TssJ/TssL/TssM (also known as ImpJ/ImpK/ImpL) and a baseplate, which is connected to the transmembrane complex and serves as a platform for inner tube and sheath polymerization. The injection process presumably starts with rearrangement of baseplate components leading to sheath contraction, opening of the baseplate and release of the inner tube and its payload into the target cell. Known T6SS effectors include peptidoglycan hydrolases, phospholipases, nucleases, ADP-ribosyltransferases, and pore-forming proteins (70); however, the vast majority of T6SS effectors remain unknown. Some of them can be identified based on the presence of VgrG or PAAR domain in their N-terminus, while others are characterized by the presence of other signature motifs, such as rearrangement hotspots (RHS), YD repeats, MIX motifs and FIX motifs (71). None of the known T6SS effectors were immediately recognizable in *Ca. T. magnifica* genomes; however, these genomes did encode between 8 and 22 RHS/YD repeat proteins (Table S11), as compared to 0 to 5 in closely related genomes. Three genes encoding RHS proteins were located near the T6SS component *vgrG*. The large variability of RHS protein count in *Ca. T. magnifica* may represent natural variation in the population or alternatively be an artifact of assembly due to the length and repetitive nature of these proteins. It is likely that T6SS found in *Ca. Thiomargarita* genomes confers a competitive advantage in the course of inter- and intraspecific conflict.

50 Among protein families, which have undergone significant expansion in *Ca. T. magnifica*, there were multiple families associated with genome rearrangements including mobile genetic elements, introns, and site-specific

recombinases. *Ca. T. nelsonii* single cells possess the same genomic features (23, 24). In addition, *Ca. T. magnifica* genomes were riddled with a myriad of toxin/antitoxin systems (Table S11). While some of these systems may be involved in maintaining genetic material, such as mobile genetic elements, others may play regulatory roles in stress response, adaptation, as well as contribute to the complex lifestyle (72).

5 Expansion of other protein families have also been attributed to complex lifestyle and morphological changes: in addition to metacaspases (PF00656) described by Flood et al., 2016 (23), these include multiple copies of protein kinase domain (PF00069) and another family of peptidases and inactivated derivatives called CHAT (PF12770) (73). Curiously, nearly a third of caspase domains are associated with another highly overrepresented domain, called FGE-sulfatase (PF03781). Similarly, nearly a third of protein kinase domains are associated with FGE-sulfatase. This domain is known to generate formylglycine, which is the catalytic residue of sulfatases, and inactivation of a human formylglycine-generating enzyme SUMF1 leads to a multiple sulfatase deficiency (74). In bacteria characterized representatives of this family are iron(II)-dependent oxidoreductases EgtB and OvoA catalyzing C-S bond formation in the biosynthesis of ergothioneine and ovothiols (75). One of the FGE-sulfatase family proteins in *Ca. T. magnifica* is a likely bifunctional OvoA protein with 5-histidylcysteine sulfoxide synthase and mercaptohistidine methyltransferase activities. However, the function of more than a hundred copies of a gene encoding FGE-sulfatase in these genomes is unclear. A few copies of a gene encoding a predicted sulfatase (PF00884) were present in *Ca. Thiomargarita* genomes, but its abundance was not nearly enough to explain the expansion of the FGE-sulfatase family. Given its association with other domains implicated in complex life cycle and cell morphology, we hypothesize that the FGE-sulfatase family in *Ca. Thiomargarita* is also involved in these processes.

20 Another remarkable feature of *Ca. T. magnifica* was a significant rearrangement of the core genes involved in cell division and morphogenesis. Whereas all genes necessary for lipid-linked peptidoglycan monomer biosynthesis and export were present (Table S8), many core cell division proteins involved in Z ring assembly and regulation were missing. Of the main Z ring components, only a cytoskeletal protein FtsZ was found; protein FtsA, which tethers FtsZ to the membrane, and protein ZipA interacting with FtsZ and essential division peptidoglycan synthases were absent. FtsZ is part of well-conserved *dcw* (“division and cell wall”) operon, which in most other large sulfur-oxidizing bacteria also includes FtsA and a key late divisome protein FtsQ along with peptidoglycan monomer synthesis enzymes MurC, MurG, and Ddl. The overall structure of *dcw* operon was preserved in *Ca. T. magnifica* and *Ca. T. nelsonii* Bud S10, but FtsA and FtsQ were conspicuously missing (Fig. 3B). Consistent with the absence of FtsA, a widely conserved complex FtsE-FtsX, which plays many roles in promoting Z ring assembly including regulation of FtsA dynamics, was also missing from *Ca. Thiomargarita* genomes. In contrast, ZapA and ZapD proteins, which interact with FtsZ to promote Z ring assembly and stability, were present, and so was ZapA-interacting protein ZapB.

25 Even more remarkably, none of the late divisome proteins were found in *Ca. Thiomargarita* genomes. These include peptidoglycan polymerizing glycosyltransferase FtsW, peptidoglycan transpeptidase FtsI (peptidoglycan-binding protein 3), a key divisome complex FtsQLB, which recruits and regulates peptidoglycan synthesis activities, and FtsK protein, which bridges Z ring with late divisome components (26). We cannot exclude the possibility that the lack of these proteins was due to the assembly gaps, but the fact that not a single one of them was found in any of *Ca. T. magnifica* or *Ca. T. nelsonii* genomes suggests that they are truly missing and not merely an artifact of incomplete sequences.

30 While the complement of divisome proteins encoded by *Ca. T. magnifica* genomes was greatly reduced, components of cell elongation complex have been duplicated, which likely happened in the ancestor of *Thiomargarita* spp (Fig. S13-15). Elongasome components, which include cytoskeletal protein MreB required for maintenance of cylindrical cell shape, its interacting partners MreC, MreD and regulator of polymerization RodZ (Fig. S13), as well as peptidoglycan polymerizing glycosyltransferase RodA and peptidoglycan transpeptidase MrdA (peptidoglycan-binding protein 2), were organized in *Ca. Thiomargarita* into 2 chromosomal clusters. The first included MreBCD proteins, RodA and MrdA, as well as membrane-bound lytic murein transglycosylase MltB and rare lipoprotein A (Fig. 3B). The second included RodZ and genes unrelated to elongasome, such as 4-hydroxy-3-methylbut-2-enyl-diphosphate synthase *ispG* (Fig. 3B). Comparison of *mre* and *rodZ* regions of *Ca. Thiomargarita* to those of other large sulfur-oxidizing bacteria revealed duplications of *rodZ*, *mreD* and *mrda*, with both copies adjacent on the chromosome. While the physiological effect of this increase of gene dosage is unclear, it is likely

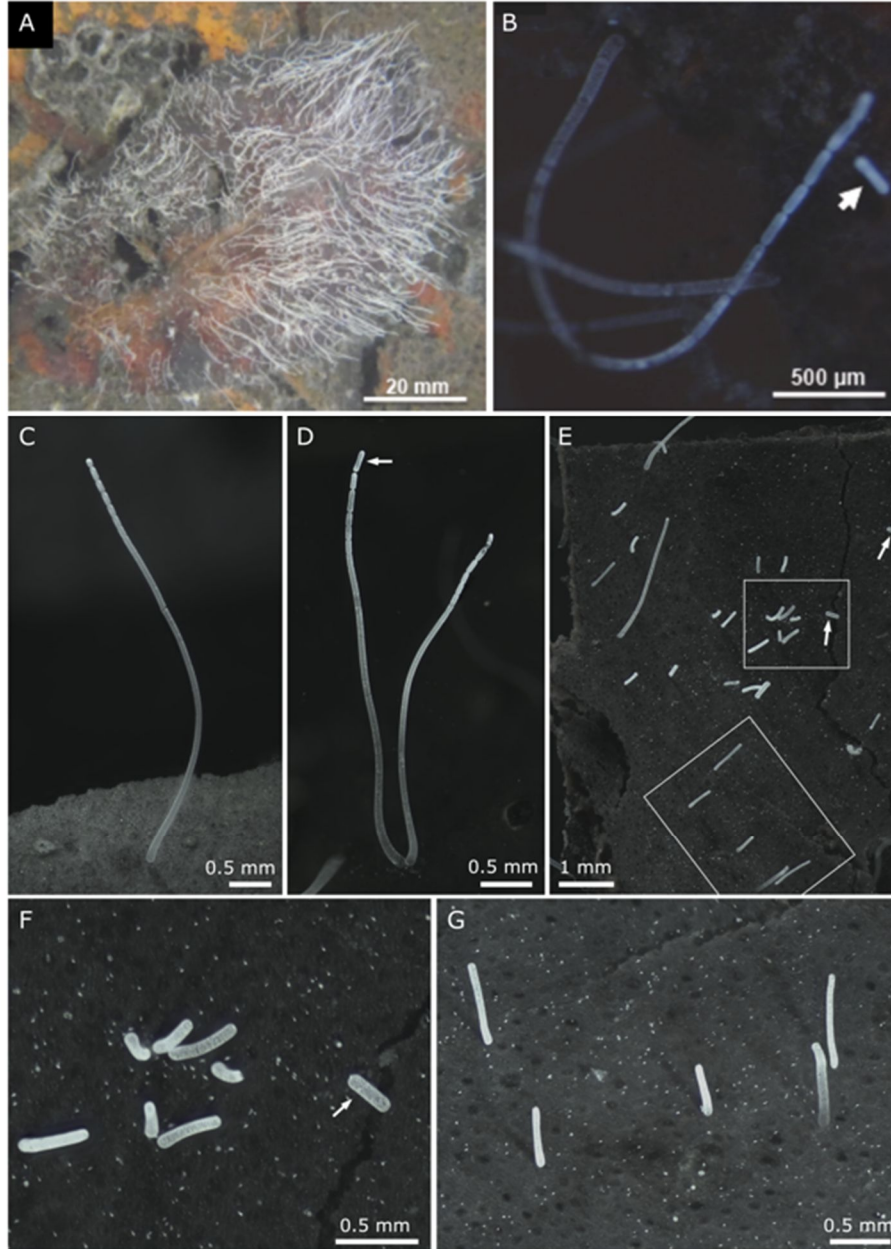
related to the complex morphology and life cycle of *Ca. T. magnifica*. Alternatively, they may compensate for the lack of peptidoglycan synthesis components of the divisome.

### **Developmental cycle of *Ca. T. magnifica***

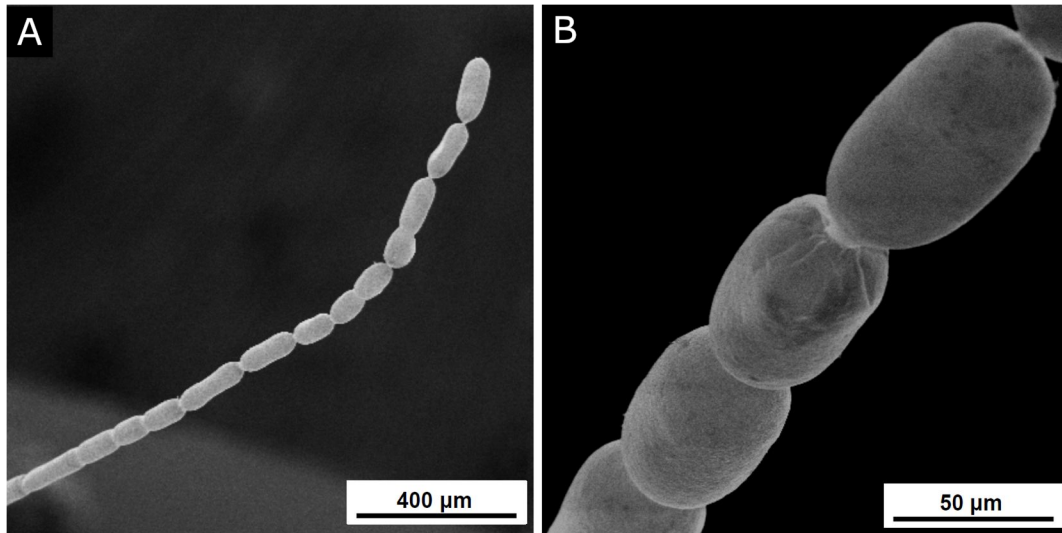
5 Because we observed fully grown filaments releasing their most apical segment live in the lab, we hypothesized that the released terminal segments represent a dispersive stage of the developmental cycle (Fig. 1C, S1). To test this hypothesis, we quantified the biovolume of the apical buds and compared it to the biovolume of a small filament (since the bacterium is uncultured). The smallest filament analyzed was observed with hard x-ray tomography and had a volume of  $2.37 \times 10^{-13} \text{ m}^3$  which corresponds almost exactly to the volume of terminal buds from the apical pole of the fully-grown filament ( $2.1$  and  $2.4 \times 10^{-13} \text{ m}^3$ ). It is likely that the rod-shaped terminal segment of filaments represents dispersive daughter cells which get released to the environment and eventually attach and grow on a new substrate. The newly attached daughter cell apparently first reshapes itself into a thin filamentous cell while conserving the same volume. Young filaments then grow in the vertical direction with the apical pole starting to constrict to form new buds (Fig. 1C, S1).  
10  
15

Based on field observations (by O. Gros, co-author), the *Ca. T. magnifica* developmental cycle may be somewhat analogous to *Zoothamnium niveum*, a giant colonial ciliate that sometimes co-occurs on the same substrate. Like *Ca. T. magnifica*, elongated colonies of *Z. niveum* grow up to 1.5 cm high, emerging above the competitive biofilm to provide an optimal access to hydrogen sulfide and oxygen to its sulfur-oxidizing gammaproteobacterial symbiont (30). Like *Ca. T. magnifica*, specialized cells eventually detach from the colony, disperse, settle in favorable environments, and grow into colonies. We observed co-occurring *Ca. T. magnifica* cells and *Z. niveum*, sometimes on the same decaying leaf. The gigantism and life cycle of *Ca. T. magnifica* may therefore allow them to exploit a niche so far known to be occupied only by Eukaryotes such as *Z. niveum*. Just like the sulfur-oxidizing ectosymbionts escape the biofilm competition by growing vertically through their association with the ciliate, *Ca. T. magnifica* grows above the biofilm where it is still exposed to high sulfide concentrations (Fig. S11).  
20  
25



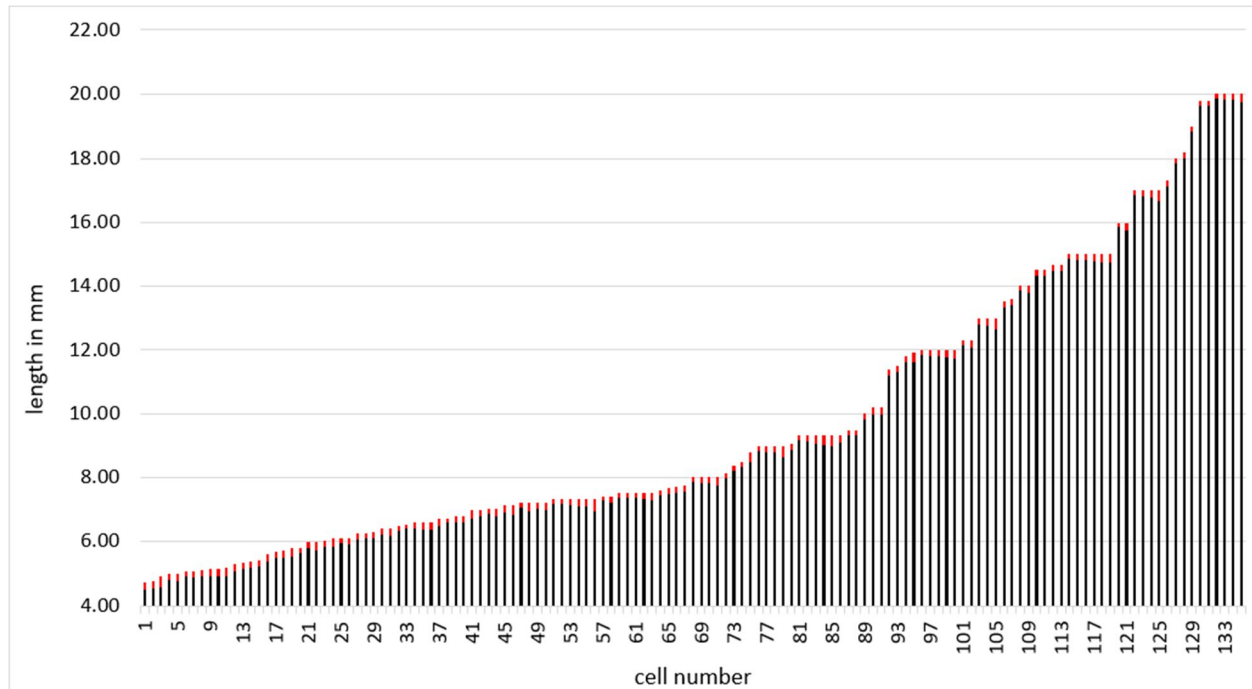


**Fig. S1.** Light micrographs of *Ca. Thiomargarita magnifica* attached to sunken leaves of *Rhizophora mangle*. A. Hundreds of filaments develop on sunken dead leaves partially buried in the sulfidic sediment of the mangrove. Similar patches were occasionally observed growing on partially buried plastic and oyster shell debris. The cells appeared bright white due to their intracellular elemental sulfur stores. B-D. Detail of budding cells showing a gradual constriction at the filament apex. The terminal segment (arrow) is still attached to the mother cell on D and has just been released into the water column for dispersion on B. E. Area of a sunken leaf with recently released terminal segments (arrows) and newly settled filaments of various sizes. Note that these young filaments (< 3 mm) are not displaying apical constrictions yet. The two rectangles' areas are shown at higher magnification on F and G.

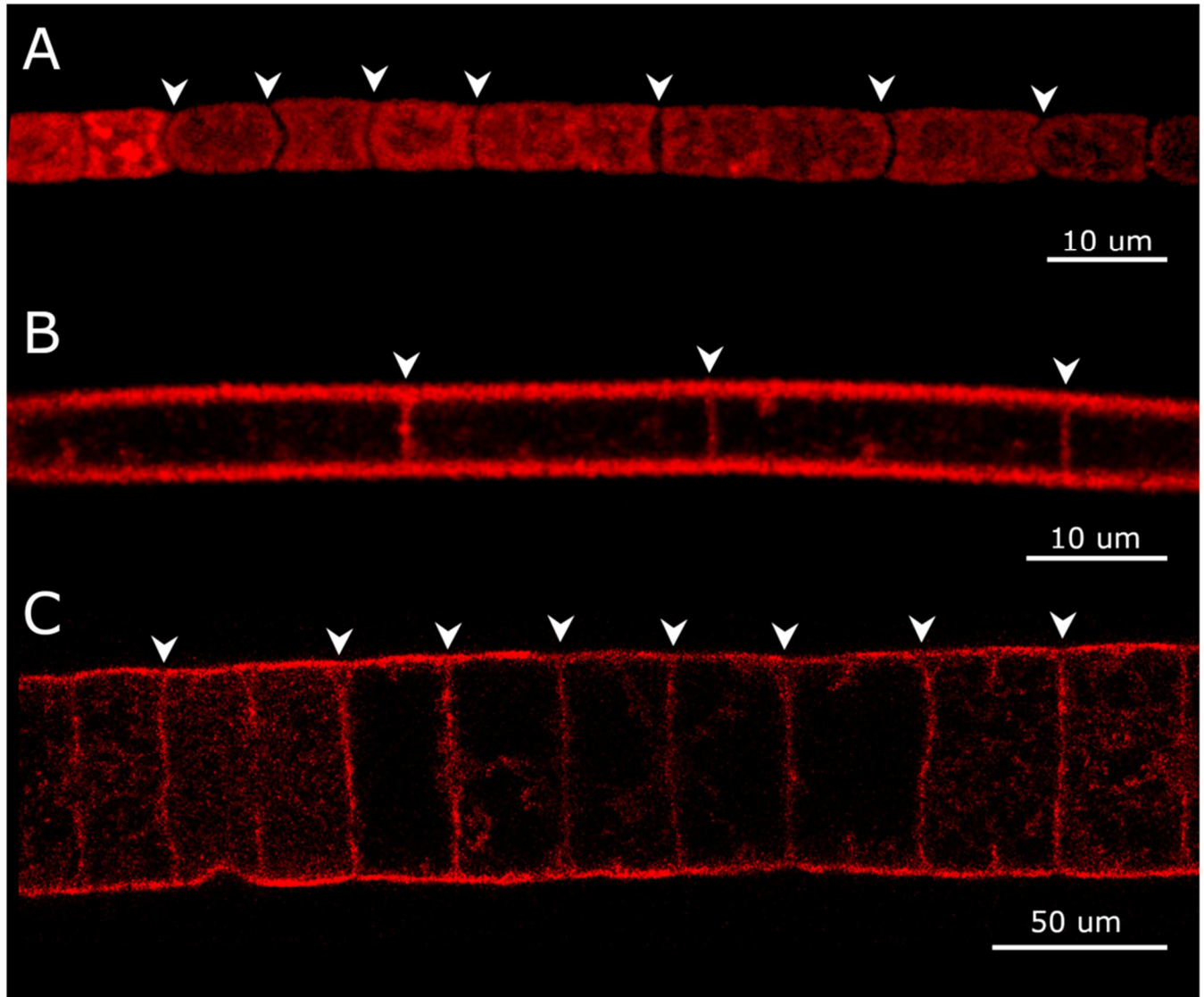


5

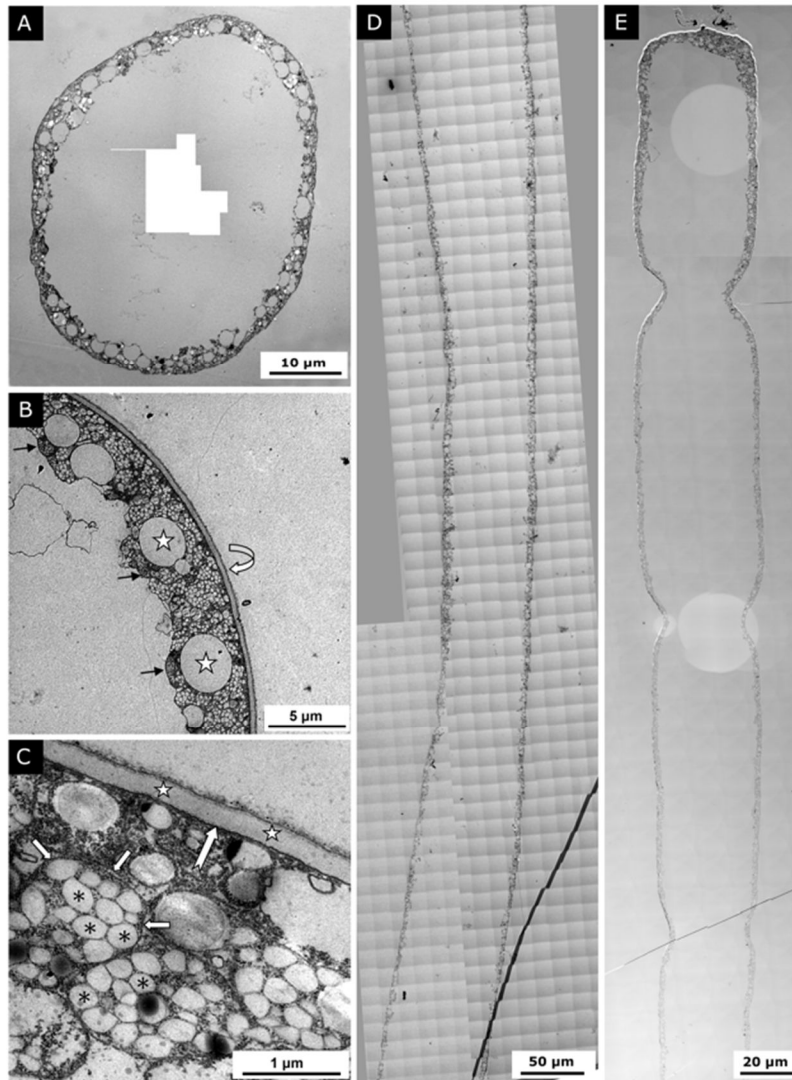
**Fig. S2.** Scanning electron microscopy observation of an individual *Ca. Thiomargarita magnifica*. A. Detail of the last 2 mm of the cell apex characterized by multiple budding daughter cells. B. Higher magnification showing the smooth surface of the cell wall and the absence of epibiotic bacteria or biofilm.



5 **Fig. S3.** Lengths of 135 *Ca. Thiomargarita magnifica* budding cells measured under a stereomicroscope. The smallest filament observed with a terminal segment here was 4.73 mm and the largest filaments were 20 mm. The length of the most apical segment is displayed in red.

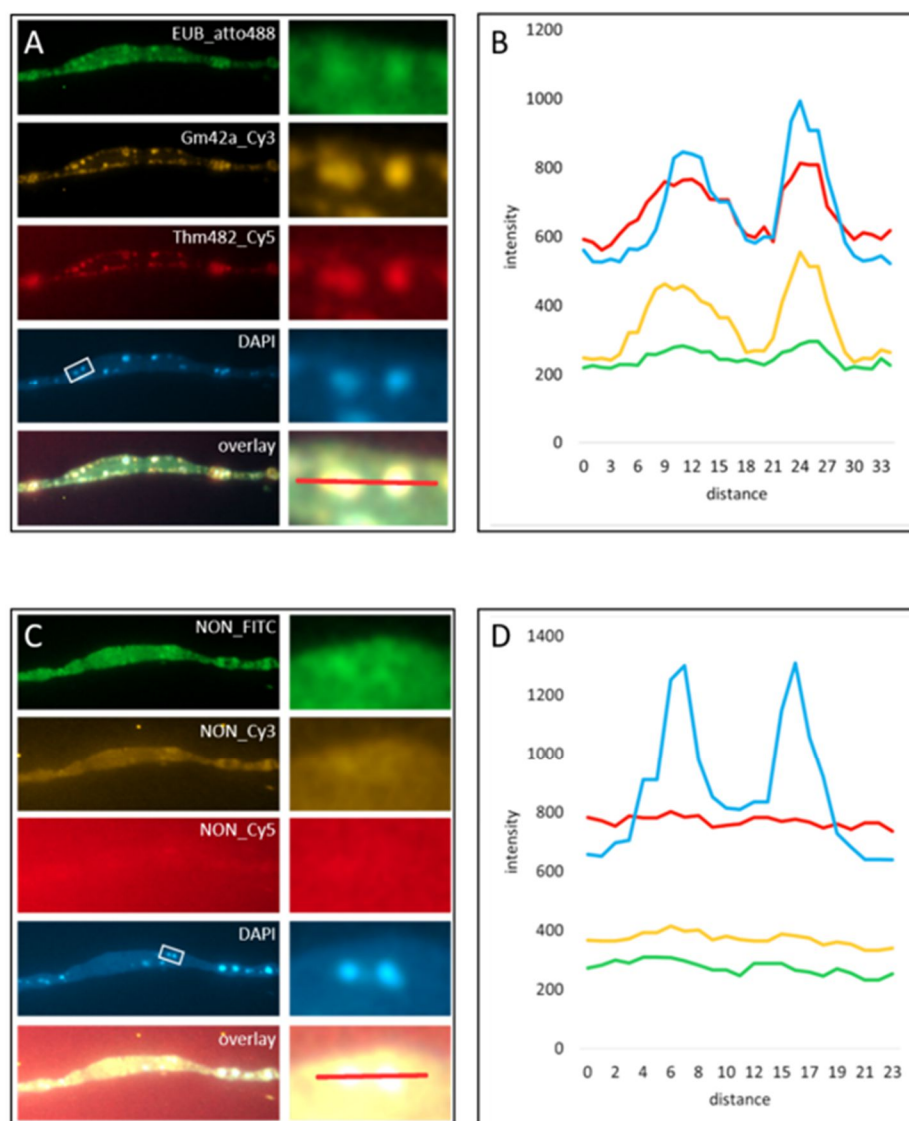


**Fig. S4.** Confocal laser scanning microscopy observations of three multicellular large filamentous bacteria after fluorescent labeling of membranes using FM 1-43x dye. A. The separations between the cells (white arrowheads) of the Cyanobacterium *Microcoleus vaginatus* are clearly visible after FM 1-43x staining. B. The membrane septum separating the vacuolated cells of a *Beggiatoa*-like filament are clearly stained by the membrane dye. C. The membrane septum separating the large vacuolated cells of the *Marithrix*-like bacterial filaments are clearly stained by the membrane dye.



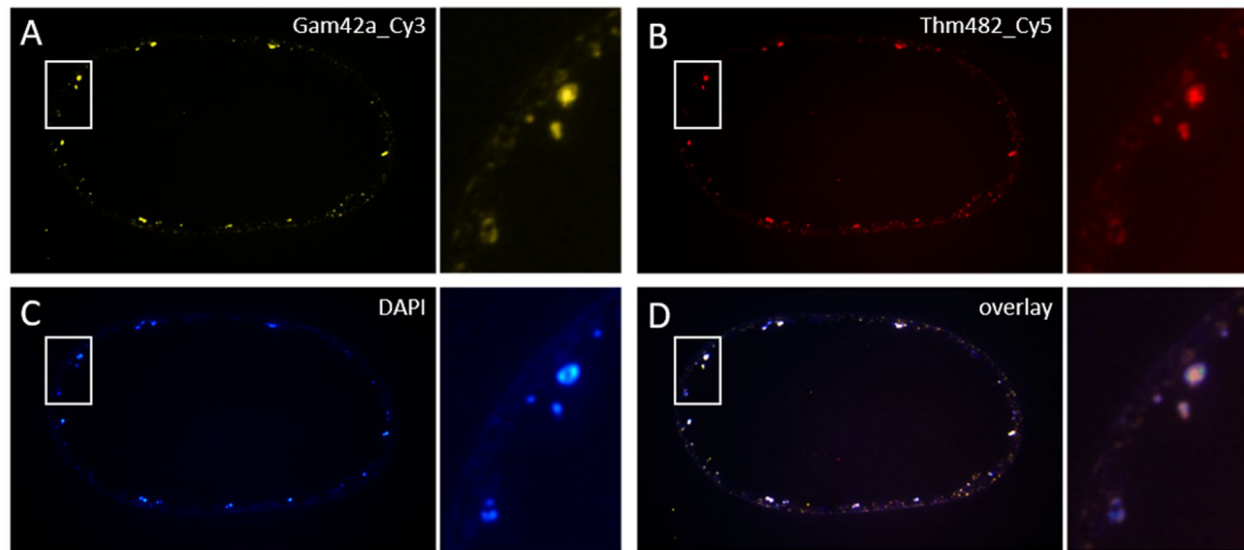
**Fig. S5.** Transmission electron microscopy observation of *Ca. T. magnifica*. A. Photo montage of a cell cross section. The cytoplasm is organized at the periphery of the cell around a large central vacuole. B. The cell envelope is represented by a thick outer layer covering the cytoplasmic membrane (curved white arrow). Electron lucent vesicles correspond to elemental sulfur granules (stars) dissolved by ethanol during sample dehydration. Pepins are located adjacent to the central vacuole (black arrows). C. Detailed view of the cytoplasmic membrane (big arrow) covered by a cell wall (stars). The cytoplasm is filled with organelles, each delimited by a membrane (small arrows), that sometimes contain multiple electron lucent vesicles (asterisks). D. Photomontage (764 images taken at magnification 3000x) of a cell longitudinal section 850.6  $\mu\text{m}$  long. The section corresponds to the middle part of the filament. No septum was observed and the cytoplasm, cell membrane and central vacuole appear continuous throughout the whole section. E. Photomontage (349 images taken at magnification 1400x) of a cell longitudinal section 374  $\mu\text{m}$  long. The montage shows the continuity of the cell and the absence of any membrane septum, even at the constriction sites.



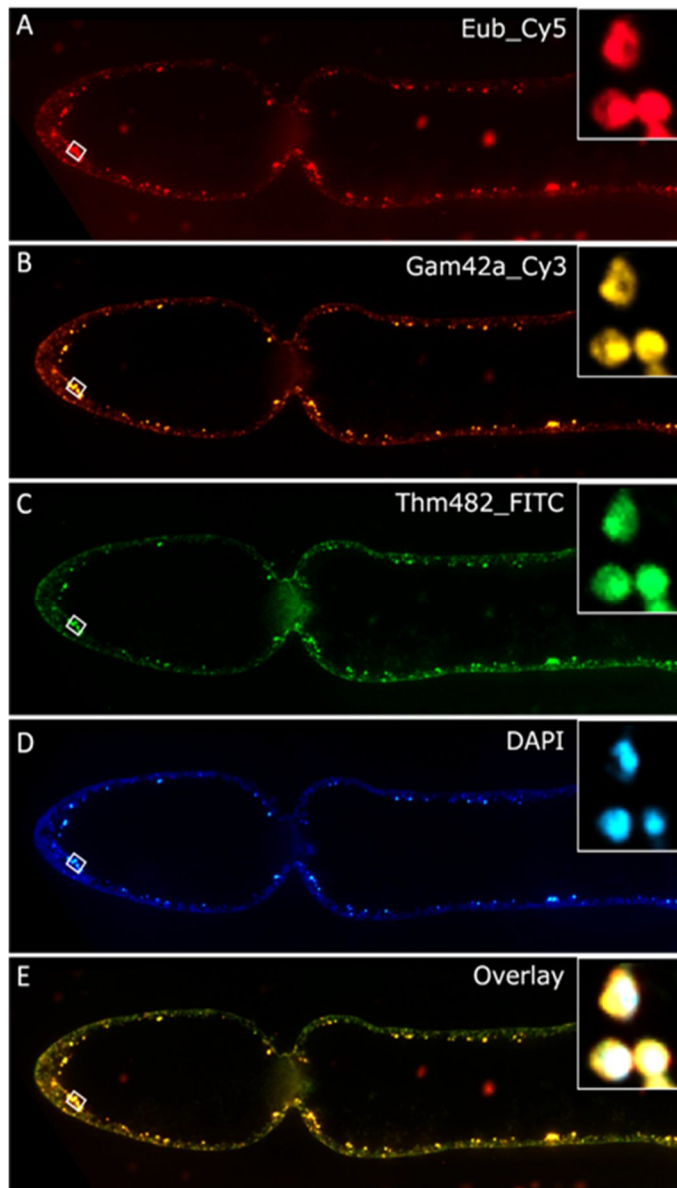


5 **Fig. S6.** Fluorescence *In Situ* Hybridization (FISH) with general, specific and nonsense probes  
 and DNA staining with DAPI on sections of resin-embedded *Ca. Thiomargarita magnifica* cells.  
 A. Pepins are labeled with the general bacterial probe (green), a gammaproteobacteria-specific  
 10 probe (yellow), the *Thiomargarita* specific probe (red), or with DAPI (blue). The detail of the  
 two pepins in the white rectangle on the DAPI image is shown at higher magnification on the  
 right. B. The intensity profiles of a line crossing the two pepins from the insert is showing peaks  
 in all four channels. C. FISH performed on sections of the same cell placed on the same slide  
 show no hybridization of the nonsense probe. D. The intensity profiles of the line crossing the  
 two pepins from the insert on B show a peak for the DAPI signal but no signal in any of the  
 probe colors.

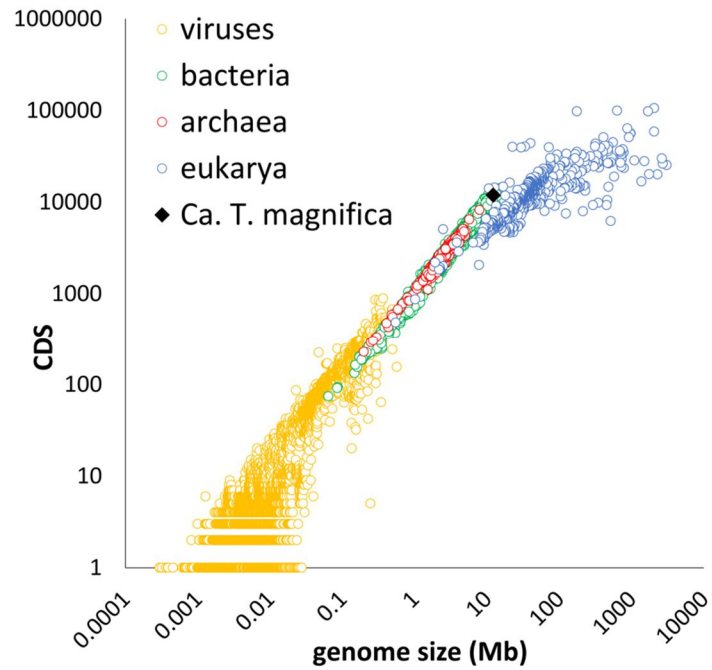




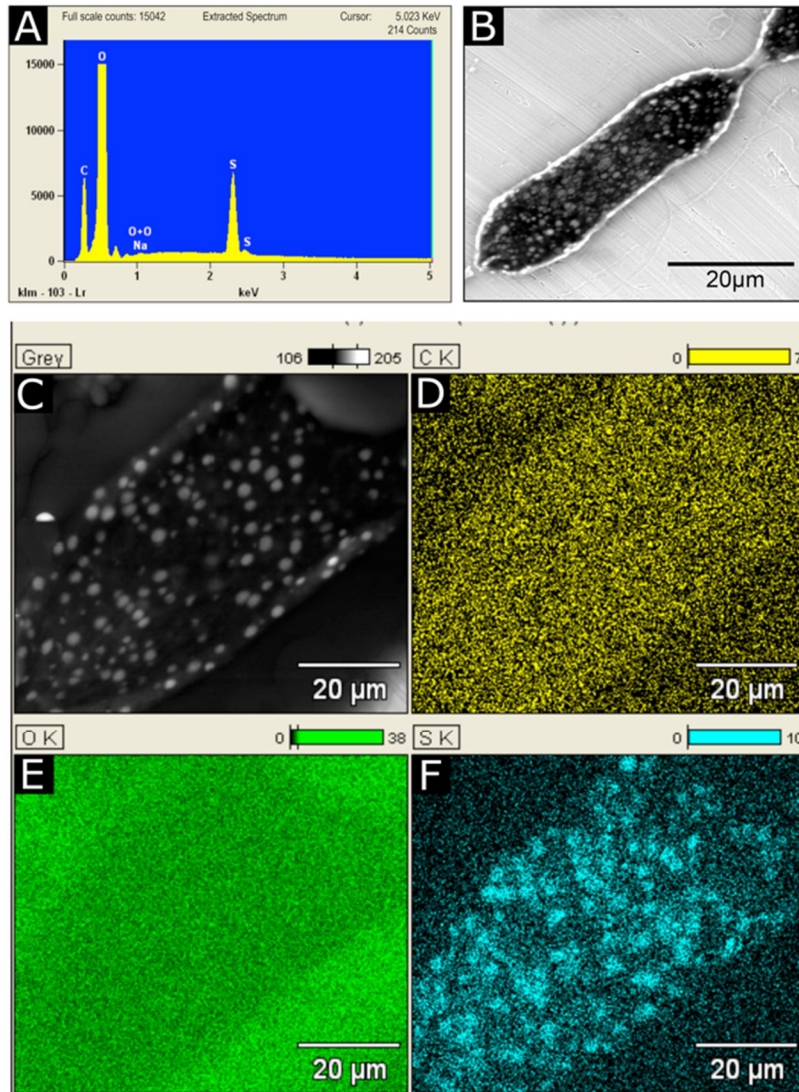
**Fig. S7.** Fluorescence *In Situ* Hybridization (FISH) with gammaproteobacteria (A) and *Thiomargarita* (B) probes and DNA staining with DAPI (C) on a cross section of the stalk area of a *Ca. Thiomargarita magnifica* cell. The pepins are labeled with both gammaproteobacteria and *Thiomargarita* probes - *Thiomargarita* is a genus within the gammaproteobacteria - as well as by DAPI as shown by the overlay of the three images (D). A higher magnification of the area in the white rectangle is provided on the right of each image. It shows that while the FISH and DAPI signals colocalize in the pepins, they do not display the same pattern. On the larger pepin for instance, the ribosomes' RNAs labeled in yellow and red are concentrated in the center of the organelle while the DNA labeled in blue shows higher signal on the sides.



**Fig. S8.** Fluorescence *In Situ* Hybridization (FISH) with probes targeting general bacteria (A, probe EUB labeled with Cy5); gammaproteobacteria (B, Gam42a probe labeled with Cy3); and *Thiomargarita*, a genus within gammaproteobacteria (C, probe Thm482 labelled with FITC); and DNA staining with DAPI (D); on a longitudinal section of the apical end of a *Ca. Thiomargarita magna* cell. On this longitudinal section pepins are present in the cytoplasm of the terminal segment as well as in the stalk before the constriction. Note that the terminal segment, like the rest of cell, presents a large central vacuole which occupies most of the cell volume. The pepins labeled with all three probes and DAPI are shown by the overlay (E). The detail of the three pepins in the white rectangle is given in the top right insert. Note that no epibiotic bacteria are detected with FISH.



**Fig. S9.** Total number of coding sequences (CDS) compared to the total genome size for all genomes retrieved from IMG/M. *Ca. Thiomargarita magnifica*'s genome is among the largest bacterial genomes with one of the highest number of coding sequences.

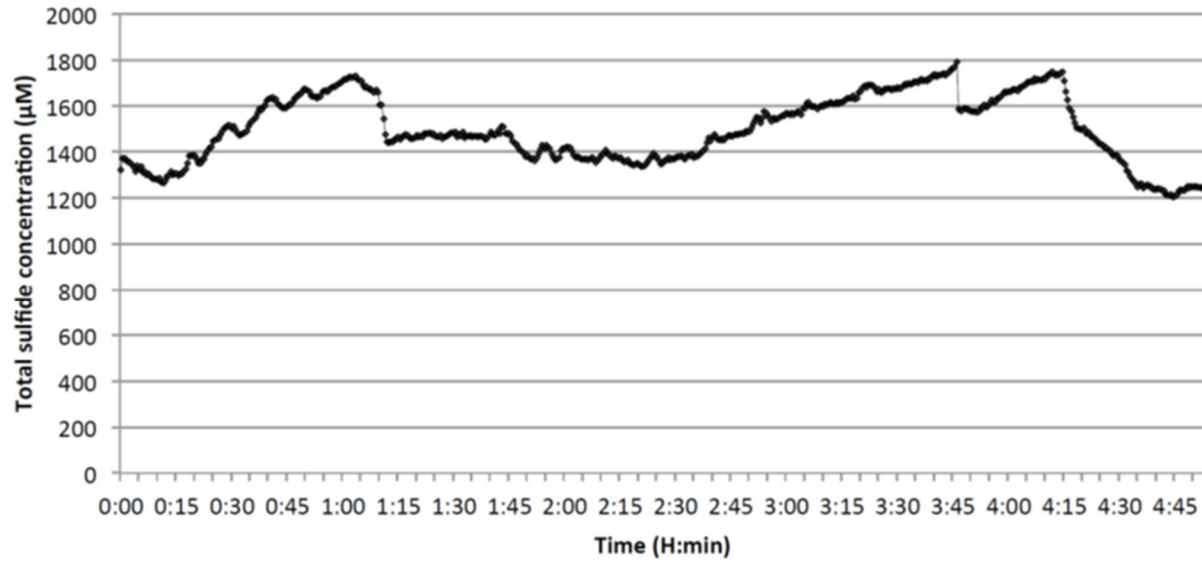


**Fig. S10.** Environmental Scanning Electron Microscopy images and analyses recorded on slightly fixed *Ca. Thiomargarita magna* under 650 mPa water vapor atmosphere. A: EDXS spectrum acquired on the area corresponding to Figure S10B. Sulfur is clearly identified. B: Image collected with secondary electron detector with 15 kV accelerating voltage. The image is dominated by backscattered electrons due to the high penetration power of the incident electrons in the specimen. The resulting atomic number (Z) contrast reveals high Z number granules (sulfur) as bright areas embedded in the light (C, N, O, H) matrix in black. Secondary contrast is present but only visible at the periphery of the cell. C: Electron back scattered images obtained at 15 kV highlighting the sulfur granules as in B. Each empty granule appears white in a back-scattered electron image due to the intensity of the BSE signal which is strongly related to the atomic number of the chemical element. D-F: X-ray maps characterizing distributions of carbon (D), oxygen (E) and sulfur (F) in the sample. The sulfur map (F) clearly confirms that the bright areas appearing in the BSE images correspond to sulfur locations.

5

10

15



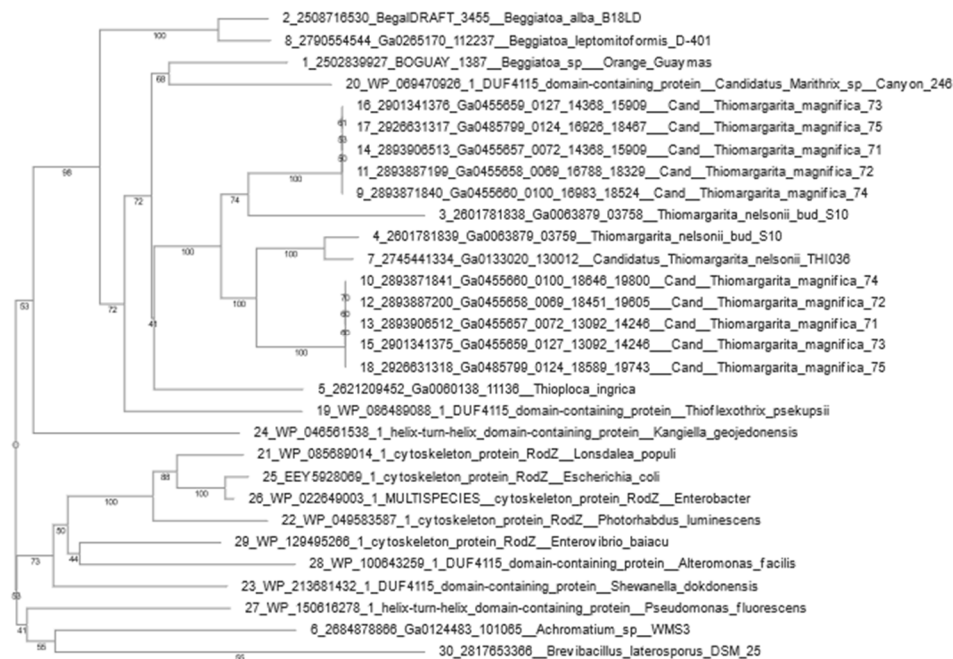
**Fig. S11.** Variation of total sulfide concentration measured in the middle of a “bouquet” of *Ca. Thiomargarita magnifica* attached to sunken leaves of *Rhizophora mangle* over 5 hours.



**Fig. S12.** Phylogenetic tree of RuBisCo large subunit proteins encoded by *Ca. T. magnifica* and representative sequences from other genomes. *Ca. T. magnifica* *rbcL* sequences cluster within the type I clade, separately from type II RuBisCO encoded by *Ca. T. nelsonii* bud S10 genome.

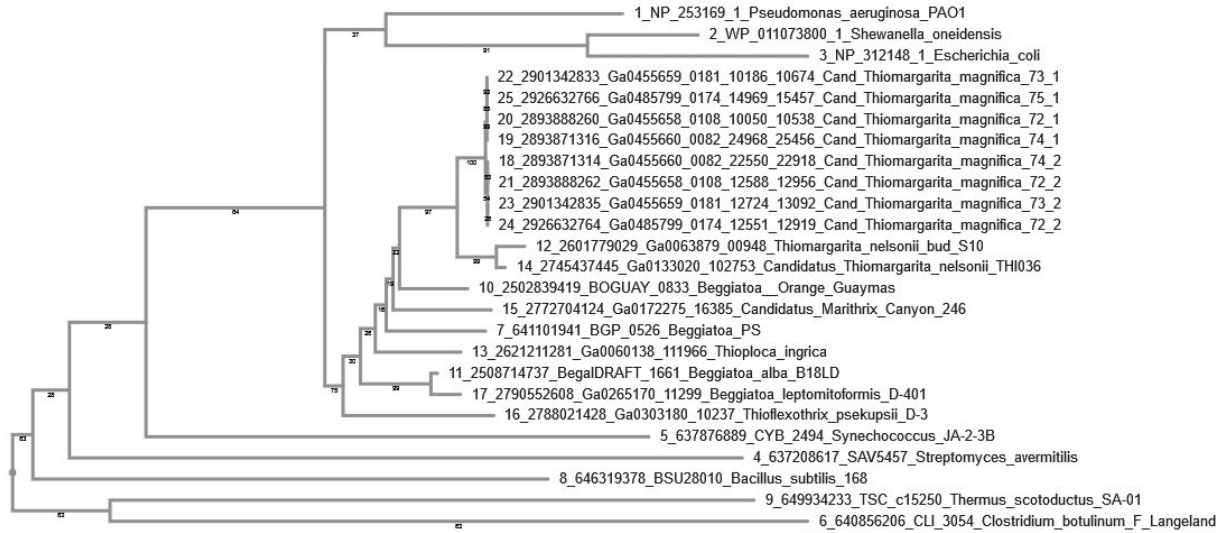
5





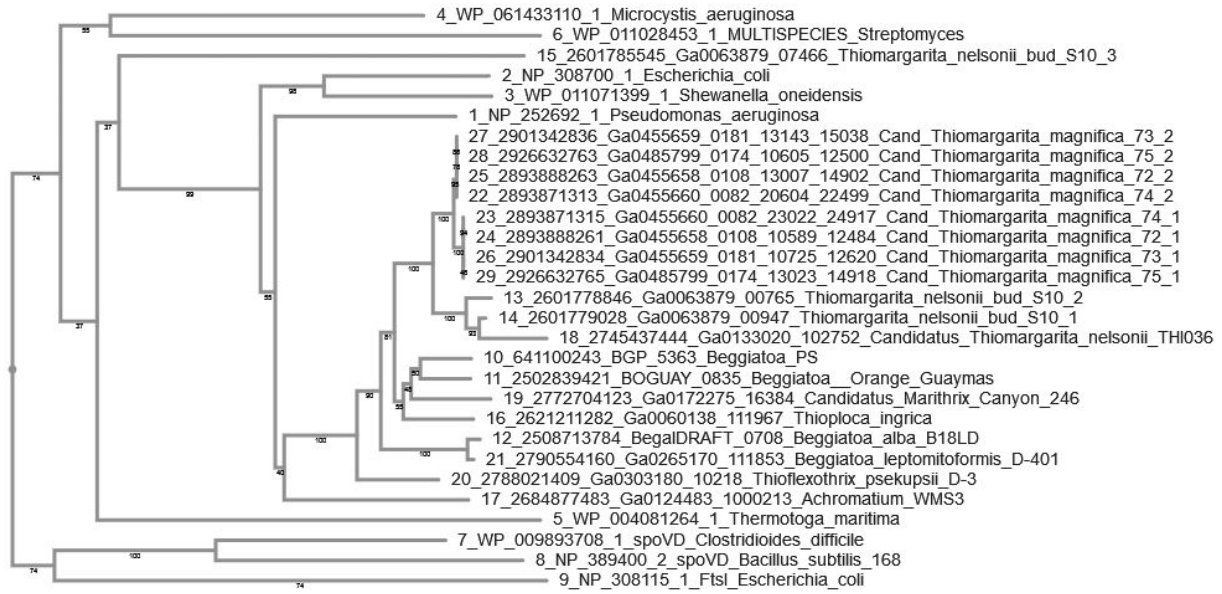
**Fig. S13.** Phylogenetic tree of RodZ proteins encoded by *Ca. T. magnifica* draft genomes and selected reference sequences. Two copies of *rodZ* found next to each other in *Ca. T. magnifica* and *Ca. T. nelsonii* bud S10 are more similar to each other than to any other sequence, suggesting a duplication in a common ancestor of *Ca. Thiomargarita* spp.

5



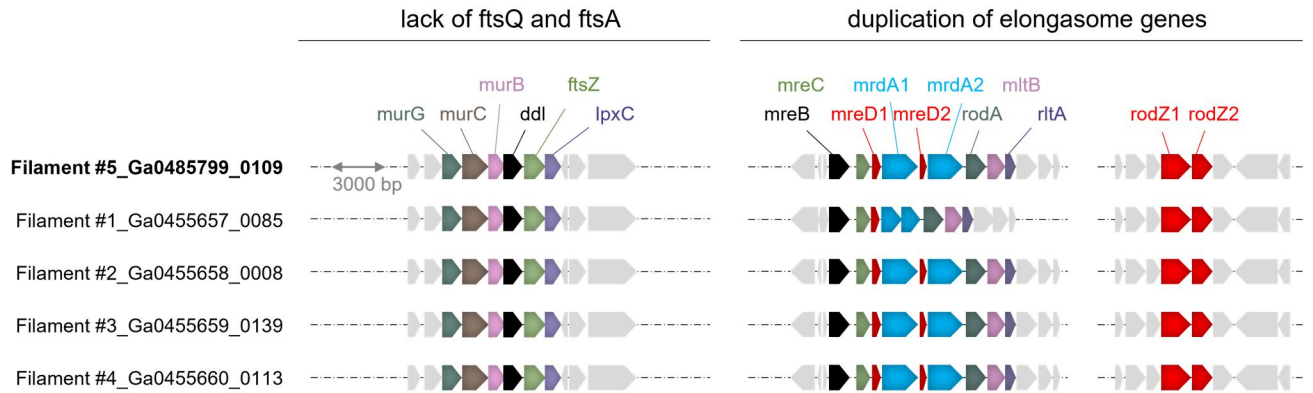
**Fig. S14.** Phylogenetic tree of MreD proteins encoded by *Ca. T. magnifica* draft genomes and selected reference sequences. Two copies of the *mreD* gene found close to each other in *Ca. T. magnifica* are more similar to each other than to any other sequence, suggesting a duplication in *Ca. T. magnifica*.

5



**Fig. S15.** Phylogenetic tree of MrdA proteins encoded by *Ca. T. magnifica* draft genomes and selected reference sequences. Two copies of the *mrdA* gene found close to each other in *Ca. T. magnifica* are more similar to each other than to any other sequence suggesting a duplication in *Ca. T. magnifica*.

5



**Fig. S16.** Detail of the *ddl*, *mreB* and *rodZ* gene neighborhood for the five *Ca. T. magnifica* draft genomes (see Fig. 3B).

	cells A, B, C, E & N		cell D
scan date	8/30/2019	8/27/2019	
total number of cells in sample	5	1	
number of entire cells in the scan	3	1	
dataset width (um)	1755	984	
dataset height (um)	1843	1008	
dataset depth (um)	4668	6270	
number of tiles	3	8	
pixel size (um)	1.00	1.00	
number of projections per tile	1601	801	
camera binning	1	2	
source filter	air	air	
source setting (kV)	40	40	
source setting (uA)	74	74	
source-RA distance (mm)	-9.2	0.0	
optical magnification	4.0	4.0	
exposure time (s)	15	10	

**Table S1.** Summary of hard x-ray computed tomography scans parameters.

cell ID	analyzed with	entire cell	cell length (mm)	min diam (μm)	max diam (μm)	total cell volume (m <sup>3</sup> )	cytoplasm volume (m <sup>3</sup> )	vacuole volume (m <sup>3</sup> )	% of vacuole	est. genome copies	est. genome copies/mm	est. genome copies in 2cm cell	resolutio X - Y (μm)	resolution Z (μm)	tiles no.
A	HXT	Y	1.19	17	33	2.37E-13	-	-	-	-	-	-	1	1	1
B	HXT	Y	1.54	17	29	3.50E-13	-	-	-	-	-	-	1	1	1
C	HXT	N	1.66	70	119	-	-	-	-	-	-	-	1	1	1
D	HXT	Y	6.37	43	83	1.42E-11	5.30E-12	8.89E-12	63	-	-	-	1	1	8
E	HXT	Y	9.66	47	96	-	-	-	-	-	-	-	1	1	3
F	CLSM	Y	1.92	54	96	6.59E-12	1.40E-12	5.19E-12	79	-	-	-	0.42	2	12
G	CLSM	Y	4.27	61	147	2.20E-11	5.91E-12	1.61E-11	73	-	-	-	0.63	2.73	5
H	CLSM	Y	2.39	39	62	4.29E-12	9.26E-13	3.36E-12	78	72419	30263	605256	0.23	1	14
I	CLSM	Y	3.35	66	112	-	-	-	-	-	-	-	1.27	2.73	6
J	CLSM	Y	2.32	52	87	-	-	-	-	-	-	-	1.24	2.73	3
K	CLSM	Y	2.83	67	71	-	-	-	-	-	-	-	0.92	2.95	8
L	CLSM	N	0.20	-	-	-	-	-	-	8931	45707	914140	0.1	1	1
M	CLSM	N	0.66	-	-	-	-	-	-	22882	34670	693397	0.23	1	1
N	HXT	N	1.97	58	101	-	-	-	-	-	-	-	1	1	2

**Table S2.** Summary of the *Ca. T. magnifica* observations with Hard X-ray Tomography (HXT) and Confocal Laser Scanning Microscopy (CLSM). A total of 14 cells were analyzed in 3D, ten of which were analyzed in their entire length. The table provides the detail of the length of the observed cell. When applicable the table also shows the cell minimum and maximum diameters, its total volume, cytoplasm volume and central vacuole volume as well as the percentage of vacuole volume relative to the whole cell. For three cells, the numbers of genome copies were estimated. This estimation is also provided as a number of genome copies per millimeter of cell and as an extrapolation for a fully grown 2 cm cell. Finally, the lateral resolution of the image as well as the z resolution and the number of tiles assembled in the dataset is provided.



	Filament 1	Filament 2	Filament 3	Filament 4	Filament 5
Library total bases (Mb)	816.5	1007.5	1659.2	1644.6	3057.3
Read counts ( $\times 10^6$ )	5.5	6.7	11.1	11.0	20.4
Assembly size (Mb)	18.87	16.88	42.45	16.26	16.48
Number of contigs	6613	4720	27356	2383	2196
Number of bins	3	2	6	2	2

**Table S3.** Reads, assembly and binning statistics for the five single amplified genomes of *Ca. Thiomargarita magnifica*.

	<i>Ca. T. magnifica</i> bin from filament					<i>Ca. T. nelsonii</i>	
	#1	#2	#3	#4	#5	Thio36	Bud S10
IMG taxon ID	2893903249	2893884007	2901335281	2893867023	2926625205	2744054729	2600255314
bases (Mb)	11.5	11.6	12.1	12.2	12	5.3	6.2
contigs	787	795	709	647	534	3613	439
gene count	11196	11401	11068	11788	11742	7596	7525
coding %	78.3	78.2	77.7	77.6	77.4	72	82
max contig length	183 kb	201 kb	167	150 kb	202 kb	14 kb	190 kb
GC %	42.37	42.34	42.31	42.41	42.39	42	41.3
prot. of known function	5706	5804	5824	5925	5887	3486	4310
genome completeness	91.01	92.15	93.03	92.86	93.74	70	89.8
Reference	this study	this study	this study	this study	this study	Winkel et al 2016	Flood et al 2016

**Table S4.** Statistics of the five single cell draft genomes of *Ca. Thiomargarita magnifica* and the two published draft genomes of *Ca. T. nelsonii*.

	Ca. T. magnifica 1	Ca. T. magnifica 2	Ca. T. magnifica 3	Ca. T. magnifica 4	Ca. T. magnifica 5	Ca. T. nelsonii Thio36	Ca. T. nelsonii Bud S10
Ca. T. magnifica 1		99.63	99.84	99.85	99.84	85.23	85.33
Ca. T. magnifica 2	99.57		99.68	99.68	99.63	85.30	85.35
Ca. T. magnifica 3	99.78	99.57		99.87	99.83	85.17	85.32
Ca. T. magnifica 4	99.81	99.64	99.86		99.86	85.22	85.33
Ca. T. magnifica 5	99.77	99.64	99.85	99.90		85.39	85.46
Ca. T. nelsonii Thio36	85.55	85.50	85.88	85.66	85.80		87.07
Ca. T. nelsonii Bud S10	85.55	85.54	85.69	85.61	85.63	86.39	

**Table S5.** Pairwise Average Nucleotide Identity (ANI) between all available *Thiomargarita* genomes. ANI values are colored from green (highest ANIs) to red (lowest ANIs).

	Filament 1	Filament 2	Filament 3	Filament 4	Filament 5
Total SNPs	153	154	137	116	140
Substitutions	119	116	93	79	86
Deletions	32	35	42	35	53
Insertions	2	3	2	2	1
Assembly Size	10,913,008	11,052,258	11,830,191	11,817,984	11,769,126
SNPs/100Kb	1.40	1.39	1.16	0.98	1.19

**Table S6. Summary of the variant calling analysis.** Detailed information on SNPs in single amplified genomes of five sorted filaments (total number of SNPs and SNPs/100kb) and the breakdown of SNPs by type (substitutions, deletions, insertions).

5

genome id	species	large sulfur bacteria	genome size (Mbp)	BGC count	total length of BGCs (Mbp)	percentage of BGCs (%)
IMG2926625205	<i>Ca. Thiomargarita magnifica</i> fil. 5	+	12.01	143	3.11	25.86
IMG2619619276	<i>Thioploca ingrica</i> Lake Okotanpe	+	4.81	50	1.01	21.04
IMG2600255314	<i>Ca. Thiomargarita nelsonii</i> bud S10	+	7.71	85	1.41	18.33
NC_009380.1	<i>Salinispora tropica</i> CNB-440	-	5.18	16	0.90	17.30
IMG2772190729	<i>Ca. Marithrix</i> sp. Canyon 246	+	3.22	30	0.54	16.70
IMG2788500497	<i>Cycloclasticus</i> sp. SP43	-	2.35	28	0.35	15.04
NC_017765.1	<i>Streptomyces hygroscopicus</i>	-	10.15	38	1.53	15.04
IMG2786546773	<i>Thioflexothrix pseukupsi</i> D-3	+	3.97	22	0.59	14.87
IMG2585428147	<i>Thiothrix eikelboomii</i> ATCC 49788	+	4.16	40	0.51	12.23
IMG2506520049	<i>Thiothrix nivea</i> JP2, DSM 5205	+	4.69	45	0.57	12.13
NZ_CP042324.1	<i>Streptomyces coelicolor</i> A3(2)	-	8.67	27	0.98	11.35
IMG2515154021	<i>Thiolinea disciformis</i> DSM 14473	+	3.92	24	0.35	9.05
GCF_000149205.2	<i>Aspergillus nidulans</i> FGSC A4	-	30.28	53	2.43	8.03
IMG2599185268	<i>Thiothrix caldifontis</i> DSM 21228	+	3.94	24	0.30	7.71
IMG2619618925	<i>Thiothrix</i> sp. EBPR_Bin_364	-	3.75	27	0.28	7.45
IMG2802428810	<i>Cocleimonas flava</i> DSM 24830	-	4.49	18	0.28	6.34
IMG2740892603	<i>Methylophaga</i> sp. SM14	-	2.89	19	0.16	5.69
IMG2517093012	<i>Leucothrix mucor</i> DSM 2157	+	5.19	30	0.29	5.53
IMG2502790011	<i>Beggiatoa</i> sp. Orange Guaymas	+	4.77	26	0.26	5.38
IMG2556921650	<i>Thiothrix lacustris</i> DSM 21227	+	3.72	29	0.20	5.28
IMG2788500402	<i>Beggiatoa leptomitiformis</i> D-401	+	4.27	18	0.18	4.17
IMG2515154111	<i>Thiofilum flexile</i> DSM 14609	+	3.79	23	0.16	4.15
IMG2508501047	<i>Beggiatoa alba</i> B18LD	+	4.27	16	0.15	3.60
IMG2684622566	<i>Achromatium</i> sp. WMS3	+	3.61	10	0.11	3.17
IMG2236661048	<i>Ca. Thiomargarita nelsonii</i> Thio36	+	5.26	31	0.11	2.10
IMG640963011	<i>Beggiatoa</i> sp. PS	+	6.06	13	0.07	1.12

**Table S7.** Biosynthetic Gene Cluster (BGC) analysis in *Thiomargarita* species, other bacteria (including large sulfur bacteria) and one fungus model system (*Aspergillus nidulans*) famously rich in secondary metabolism.

Function ID	Function Name	2684622566	2508501047	2788500402	2786546773	2619619276	2772190729	2502790011	640963011	2744054729	260025314	2893903249	2893884007	2901335281	2893867023	#1	#2	#4	#5
		Achromatium m.sp. WMS3	Beggiatoa alba B18LD	Beggiatoa leptomitofor	Beggiatoa Thioloventhri	Thiopleca ingrlica Lake	Ca. Maritrix sp. Canyon	Beggiatoa sp. Orange	Beggiatoa sp. Beggiatoa	Ca. Thiomargarita sp. TH036	Bud510	Ca. Thiomargarita magnifica							
<b>Peptidoglycan biosynthesis</b>																			
KO:K00975	UDP-N-acetylmuramate dehydrogenase [EC:3.1.98] (murB)	1	1	1	1	2	1	1	1	1	1	1	1	1	1	1	1	1	1
KO:K01924	UDP-N-acetylmuramate-lysine ligase [EC:6.3.2.8] (murC)	1	1	1	1	1	1	1	1	1	1	1	1	1	1	1	1	1	1
KO:K01925	UDP-N-acetylmuramoyl-L-alanyl-D-glutamate-2,6-diaminopimelate ligase [EC:6.3.2.13] (murD)	0	1	1	1	1	1	1	1	0	0	1	1	1	1	1	1	1	1
KO:K01928	UDP-N-acetylmuramoyl-L-alanyl-D-glutamate-2,6-diaminopimelate ligase [EC:6.3.2.13] (murD)	3	1	1	1	1	1	1	1	1	1	1	1	1	1	1	1	1	1
KO:K01921	D-alanine-D-alanine ligase [EC:6.3.2.4] (ddl)	1	1	1	1	1	1	1	1	1	1	1	1	1	1	1	1	1	1
KO:K01929	UDP-N-acetylmuramoyl-tripeptide-D-alanyl-D-alanine ligase [EC:6.3.2.10] (murF)	2	1	1	1	1	1	1	1	1	1	1	1	1	1	1	1	1	1
KO:K01000	phospho-N-acetylmuramoyl-pentapeptide-transferase [EC:2.7.8.13] (mraY)	0	1	1	1	1	1	1	1	1	1	1	1	1	1	1	1	1	1
KO:K02563	UDP-N-acetylglucosamine-N-acetylmuramyl-(penta-peptide) pyrophosphoryl-undecaprenol	1	1	1	1	1	1	1	1	1	1	1	1	1	1	1	1	1	1
KO:K03980	N-acetylglucosamine transferase [EC:2.4.1.227] (murG)	1	1	1	1	1	1	1	1	1	1	1	1	1	1	1	1	1	1
KO:K03980	putative peptidoglycan lipid II flippase (murI, mvfN)	1	1	1	1	1	1	1	1	1	1	1	1	1	1	1	1	1	1
<b>Z ring main components</b>																			
KO:K03531	cell division protein FtsZ (ftsZ)	1	1	1	1	1	1	1	1	1	1	1	1	1	1	1	1	1	1
KO:K03590	cell division protein FtsA (ftsA)	1	1	0	1	1	1	1	1	0	0	0	0	0	0	0	0	0	0
KO:K03528	cell division protein ZipA (zipA)	0	1	1	1	1	1	1	1	1	0	0	0	0	0	0	0	0	0
<b>Z ring assembly regulation</b>																			
KO:K09811	cell division transport system permease protein (ftsX)	0	1	1	1	1	1	1	2	1	0	0	0	0	0	0	0	0	0
KO:K09812	cell division transport system ATP-binding protein (ftsE)	0	2	1	1	1	1	1	1	1	0	0	0	0	0	0	0	0	0
KO:K09888	cell division protein ZapA (zapA)	0	1	1	1	1	1	1	1	1	1	1	1	1	1	1	1	1	1
KO:K09892	cell division protein ZapB (zapB)	1	1	1	1	1	1	1	1	1	1	1	1	1	1	1	1	1	1
KO:K18778	cell division protein ZapD (zapD)	1	1	1	1	1	1	1	1	1	0	0	0	0	0	0	0	0	0
KO:K06916	cell division protein ZapE (zapE)	0	1	1	1	1	1	1	1	1	0	0	0	0	0	0	0	0	0
KO:K06286	septation ring formation regulator (etra)	0	0	0	0	0	0	0	0	0	0	0	0	0	0	0	0	0	0
KO:K09772	cell division inhibitor SepF (sepf)	0	0	0	0	0	0	0	0	0	0	0	0	0	0	0	0	0	0
KO:K18657	cell division protein ZapC (zapC)	0	0	0	0	0	0	0	0	0	0	0	0	0	0	0	0	0	0
<b>Late division proteins</b>																			
KO:K03466	DNA segregation ATPase FtsK/SpoIIIE, S-DNA-T family (ftsK-spoIIIE)	2	1	1	1	1	1	1	1	1	0	0	0	0	0	0	0	0	0
KO:K03469	cell division protein FtsQ (ftsQ)	1	1	1	1	1	1	1	1	1	0	0	0	0	0	0	0	0	0
KO:K03586	cell division protein FtsL (ftsL)	0	1	1	1	1	1	1	1	1	0	0	0	0	0	0	0	0	0
KO:K05589	cell division protein FtsB (ftsB)	0	1	1	1	1	1	1	1	1	0	0	0	0	0	0	0	0	0
KO:K03588	cell division protein FtsW (ftsW, spoVE)	1	1	1	1	1	1	1	1	1	0	0	0	0	0	0	0	0	0
KO:K03591	cell division protein FtsN (ftsN)	0	0	0	0	0	0	0	0	0	0	0	0	0	0	0	0	0	0
KO:K03587	cell division protein FtsI (penicillin-binding protein 3) (ftsI)	1	1	1	1	1	1	1	1	1	0	0	0	0	0	0	0	0	0
<b>Elongasome proteins</b>																			
KO:K03569	rod shape-determining protein MreB and related proteins (mreB)	1	1	1	1	2	1	2	1	3	0	1	2	2	2	2	2	2	2
KO:K03570	rod shape-determining protein MreC (mreC)	1	1	1	1	1	1	1	1	1	0	1	1	1	1	1	1	1	1
KO:K03571	rod shape-determining protein MreD (mreD)	1	1	1	1	1	1	1	1	1	1	1	2	2	2	2	2	2	2
KO:K12552	penicillin-binding protein 1 [EC:3.4.-.-] (pbpA)	0	0	0	0	0	0	0	0	0	0	0	0	0	0	0	0	0	0
KO:K18770	penicillin-binding protein 1A (pbpA)	0	0	0	0	0	0	0	0	0	0	0	0	0	0	0	0	0	0
KO:K05515	penicillin-binding protein 2 (mrdA)	1	1	1	1	1	1	1	1	1	1	1	2	2	2	2	2	2	2
KO:K12555	penicillin-binding protein 2A [EC:2.4.1.129.2.-.] (pbp2A)	0	0	0	0	0	0	0	0	0	0	0	0	0	0	0	0	0	0
KO:K06687	penicillin-binding protein 2B [EC:2.3.2.-.] (pbp2B, penA)	0	0	0	0	0	0	0	0	0	0	0	0	0	0	0	0	0	0
KO:K08724	penicillin-binding protein 2B (pbpB)	0	0	0	0	0	0	0	0	0	0	0	0	0	0	0	0	0	0
KO:K05837	rod shape determining protein RodA (rodA, mreB)	1	1	1	1	1	1	1	1	1	0	1	1	1	1	1	1	1	1
KO:K15539	cytoskeleton protein RodZ (rodZ)	1	1	1	1	0	1	0	2	1	1	2	2	2	2	2	2	2	2



**Table S8.** Summary table of the divisome and elongasome genes detected in the genomes of *Ca. T. magnifica*, *Ca. T. nelsonii* and eight other LSBs.

See attached excel sheet for the table below.

**Table S9.** Summary table of the metabolic capabilities of *Ca. T. magnifica*, *Ca. T. nelsonii* and height other LSBs based on their genome analysis.

5

Function ID	Function Name	Achromatium sp. WMS3	Beggiatoa B18LD	Beggiatoa leptotiform is-D-401	Thioloeca Ingricalake Okotampe	Candidatus Maritrix sp. Canyon 246	Beggiatoa sp. Orange Guaymas	Beggiatoa sp. PS	Ca. Thiomargarita neilonii TH086	Ca. Thiomargarita neilonii bud S10	Ca. Thiomargarita magnifica #1	Ca. Thiomargarita magnifica #2	Ca. Thiomargarita magnifica #3	Ca. Thiomargarita magnifica #4	Ca. Thiomargarita magnifica #5
COG3501	Uncharacterized conserved protein, implicated in type VI secretion system	0	0	0	2	1	0	0	1	2	4	4	4	4	4
KD-K11891	Predicted component of the type VI protein secretion system (ImpL, vask, lsm7)	0	0	0	1	0	0	0	0	0	2	2	2	2	2
KD-K11892	Type VI secretion system protein ImpK (ImpK, ompA, vasF, dotU)	0	0	0	1	1	0	0	0	1	1	1	1	1	1
KD-K11893	Type VI secretion system protein ImpJ (ImpJ, ompA, vasF, dotU)	0	0	0	1	0	0	0	0	1	0	0	0	0	0
KD-K11894	Type VI secretion system protein ImpI (ImpI, vask)	0	0	0	1	1	0	0	2	1	1	1	1	1	1
KD-K11895	Type VI secretion system protein ImpH (ImpH, vask)	0	0	0	1	0	0	0	1	1	1	1	1	1	1
KD-K11896	Type VI secretion system protein ImpG (ImpG, vasa)	0	0	0	1	0	0	0	0	1	1	1	1	1	1
KD-K11897	Type VI secretion system protein ImpF (ImpF)	0	0	0	1	0	0	0	0	0	0	0	0	0	0
KD-K11900	Type VI secretion system protein ImpC (ImpC)	0	0	0	1	0	0	0	2	3	3	2	3	3	3
KD-K11901	Type VI secretion system protein ImpB (ImpB)	0	0	0	1	0	0	0	0	1	1	0	1	1	1
KD-K11902	Type VI secretion system protein ImpA (ImpA)	0	0	0	1	0	0	0	0	0	0	0	0	0	0
KD-K11903	Type VI secretion system secreted protein Hcp (K11903, hcp)	0	0	0	1	1	0	0	2	2	1	1	1	1	1
KD-K11904	Type VI secretion system secreted protein VgrG (VgrG)	2	0	0	7	1	0	0	1	5	2	3	3	3	3
KD-K11905	Type VI secretion system protein VsaG (VsaG)	0	0	0	0	0	0	0	0	0	1	1	1	1	1
KD-K11907	Type VI secretion system protein VsaI (VsaI)	0	0	0	0	1	0	0	0	0	1	1	1	1	1
KD-K11910	Type VI secretion system protein VsaJ (VsaJ)	0	0	0	0	0	0	0	0	0	1	1	1	1	1
Phn0598	PhnK motif	0	0	0	0	0	0	0	0	0	1	1	1	1	1
Phn0597	Uncharacterized protein conserved in bacteria (DUF169)	0	0	0	2	0	0	0	3	3	1	1	1	1	1
Phn13503	Domain of unknown function (DUF4123)	0	0	0	0	1	0	0	0	3	1	1	1	1	1
	<b>Predicted type 6 secretion system presence/absence</b>	no	no	no	yes	yes?	no	no	yes	yes	yes	yes	yes	yes	yes

**Table S10.** Summary table of type VI secretion genes found in the genomes of *Ca. T. magnifica*, *Ca. T. nelsonii* and eight other LSBs.

Function ID	Function Name	Achromatium sp. WMS3	Beggiatoa alba B18LD	Beggiatoa leptomitofa rrmis D-401	Thioflexothrix D-3	Thioplaca ingrica Lake Oktaampe	Candidatus Maritrix sp. Canyon 246	Beggiatoa sp. Orange Guaymas	Beggiatoa sp. PS	Ca. Thiomargarita nelsonii TH036	Ca. Thiomargarita bud 510	Ca. Thiomargarita #1	Ca. Thiomargarita #2	Ca. Thiomargarita #3	Ca. Thiomargarita #4	Ca. Thiomargarita #5	
	Toxin/antitoxin systems																
pfam13304	AAA domain, putative AbiEii toxin, Type IV TA system	3	13	2	18	6	52	34	39	52	139	254	241	255	244	257	
pfam08843	Nucleo(d)W/transferase AbiEii toxin, Type IV TA system	0	1	1	1	1	0	0	0	0	3	9	9	9	9	9	
pfam13338	Transcriptional regulator, AbiEi antitoxin	0	0	0	0	0	0	0	0	0	0	1	1	1	0	1	
pfam14459	Transcriptional regulator, AbiEi antitoxin, Type IV TA system	0	0	0	0	0	0	0	0	0	1	2	2	2	2	2	
pfam17194	Transcriptional regulator, AbiEi antitoxin N-terminal domain	0	0	0	0	0	0	0	0	1	1	3	2	2	2	2	
pfam04365	Ribonuclease toxin, BrrT, of type II toxin-antitoxin system	11	1	1	4	2	8	7	5	7	13	22	23	24	25	24	
pfam14384	BrrA antitoxin of type II toxin-antitoxin system	3	0	0	0	0	4	3	3	1	7	7	7	6	6	6	
pfam07927	HicA toxin of bacterial toxin-antitoxin	9	3	2	0	5	7	13	17	4	5	15	13	16	16	15	
pfam15919	HicB-like antitoxin of bacterial toxin-antitoxin	5	2	2	0	6	5	8	11	3	4	9	8	9	9	9	
pfam02452	PfmK-like, MazF-like toxin of type II toxin-antitoxin system	0	0	1	1	2	6	11	14	7	12	13	14	14	14	14	
pfam04014	Antidote-toxin recognition MazE, bacterial antitoxin	1	0	0	1	2	2	2	2	0	0	1	1	1	1	1	
pfam02604	Antitoxin Pld, YefM, type II toxin-antitoxin system	14	1	0	1	10	5	6	17	3	10	12	12	12	12	12	
pfam05015	RelE-like toxin of type II toxin-antitoxin system HigB	0	1	0	0	4	0	4	5	0	3	4	4	4	4	4	
pfam02936	RelE toxin of RelE/RelB toxin-antitoxin system	1	1	2	1	0	0	1	3	0	7	1	1	1	1	1	
pfam04221	RelB antitoxin	1	0	0	0	0	0	2	1	1	2	1	1	1	1	1	
pfam05016	ParE toxin of type II toxin-antitoxin system, parDE	8	1	0	1	4	5	4	5	1	1	8	8	8	8	8	
pfam07591	Pretoxin HINT domain	0	0	0	0	0	0	0	0	0	2	2	1	2	4	1	
pfam09907	HigB toxin, RelE-like toxic component of a toxin-antitoxin system	2	0	1	0	0	3	1	2	5	4	9	7	11	8	7	
pfam13957	Toxin YafO, type II toxin-antitoxin system	0	1	0	0	0	1	0	0	0	0	1	1	1	1	1	
pfam15738	Bacterial toxin of type II toxin-antitoxin system, YafQ	2	0	0	0	3	3	3	1	0	2	2	2	2	2	2	
pfam06769	YoeB-like toxin of bacterial type II toxin-antitoxin system	6	0	0	3	7	4	6	6	1	6	8	9	7	8	8	
pfam09957	Bacterial antitoxin of type II TA system, VappB	2	1	2	1	2	1	1	3	1	2	3	2	4	2	4	
pfam12441	CopG antitoxin of type II toxin-antitoxin system	1	0	0	0	0	1	3	1	1	2	7	7	7	7	7	
pfam15731	Antitoxin component of bacterial toxin-antitoxin system, MgsA	1	1	0	0	0	3	2	3	2	7	8	9	8	8	8	
pfam15943	Putative antitoxin of bacterial toxin-antitoxin system, YdaS/YdaT	0	0	0	0	0	0	0	0	0	0	1	0	1	1	1	
pfam03781	Caspase/FGE sulfatase domain proteins	33	4	9	5	3	20	18	17	43	60	110	110	121	120	117	
pfam06556	Caspase domain	57	2	4	3	4	32	15	14	47	59	105	101	113	116	113	
pfam00069	Protein kinase domain	19	9	10	9	11	11	20	11	32	48	74	72	78	77	77	
pfam12770	CHAT domain	9	8	10	9	10	7	15	21	19	24	63	54	67	67	69	
pfam05593	T655 effectors	0	1	0	2	0	1	3	5	6	18	9	8	9	22	10	
	LRR proteins																
pfam03160	CalX-beta domain	0	1	1	1	13	4	9	10	18	38	92	86	106	110	94	
pfam02623	Leucine rich repeat N-terminal domain	0	0	2	0	8	2	4	8	5	18	37	40	52	54	51	
pfam13516	Leucine Rich repeat	0	0	0	0	0	0	1	0	0	0	1	2	1	1	1	
pfam13855	Leucine rich repeat	4	1	3	0	6	1	11	16	7	19	54	50	67	69	57	

**Table S11.** Summary table of Pfam families overrepresented in *Ca. T. magnifica* genomes in comparison to other LSBs.

### Movie S1.

3D rendering of 6.37 mm long *Ca. T. magnifica* cell observed with hard x-ray tomography (cell *D*, see raw data in Movie S2). The cell cytoplasm has been segmented out and appears continuous along most of the cell length until the most apical constrictions close off completely. See 2D virtual slices in Movie S2.

### Movie S2.

Fly-through animation of the 6271 virtual slices from cell *D* dataset acquired with hard x-ray tomography with an isotropic resolution of 1  $\mu\text{m}$ . The cell cytoplasm appears as a white ring. Note that samples for HXT were stained with osmium tetroxide to increase contrast on cell membranes (76, 77). The cell cytoplasm was segmented on each slice to produce the 3D rendering of the entire cell presented in Movie S1.

### Movie S3.

Fly-through animation of the virtual slices from the 4.27 mm long cell *G* observed with CLSM after fluorescent labeling of membranes (Table S2). The 3D mesh rendering shows the cell wall in green and the continuous central vacuole in red.

### Movie S4.

The video shows portions of a *Ca. T. magnifica* and a *Marithrix*-like cell observed in 3D at the confocal laser scanning microscope after staining with the membrane dye FM 1-43x. The membrane septa delimiting the cells of the multicellular *Marithrix*-like filament are clearly visible while no membrane septum is visible inside the *Ca. T. magnifica* cell.

### Movie S5.

The video shows a portion of the *Ca. T. magnifica* cell used for the estimation of the polyploidy level (cell *M*, Table S2). After DAPI staining, the cell was observed at the confocal laser scanning microscope in 3D by acquiring a z-stack of images. The 3D reconstruction clearly shows the numerous DNA clusters of various sizes spread throughout the cell cytoplasm at the periphery of the central vacuole.

### Movie S6.

3D rendering of the two smallest cells observed with hard x-ray tomography (cells *A* in yellow and *B* in blue, Table S2). The basal parts of three larger cells (*C*, *E*, and *N*) are also visible. All *Ca. T. magnifica* cells are attached to a sunken leaf and are growing out of the biofilm covering the leaf.



